

# Staða og horfur á vinnumarkaði í aðdraganda kjarasamninga

Katrín Ólafsdóttir, dósent

2. júní 2022



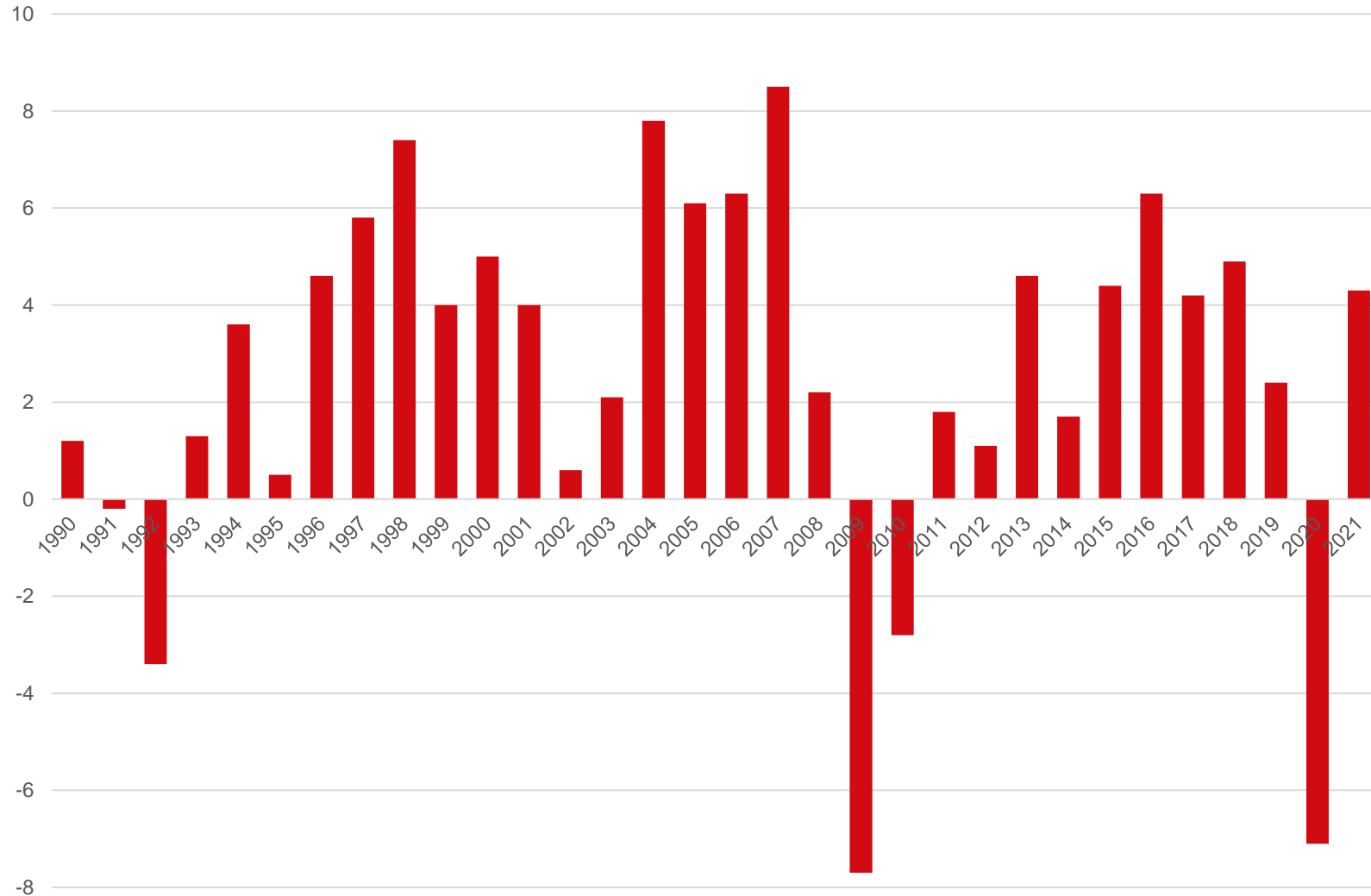


# Snúin staða

- Óvissa í alþjóðamálum
- Covid-19
- Stríð í Úkraínu
- Hnökror í framleiðslukeðjunni
- Hækkun hrávöruverðs
- Mesta verðbólga í 40 ár
- Hagvöxtur
- Þenslu spáð
- Minnkandi atvinnuleysi
- Hækkandi húsnæðisverð
- Vaxandi verðbólga
- Hækkandi vextir
- Halli á rekstri ríkissjóðs

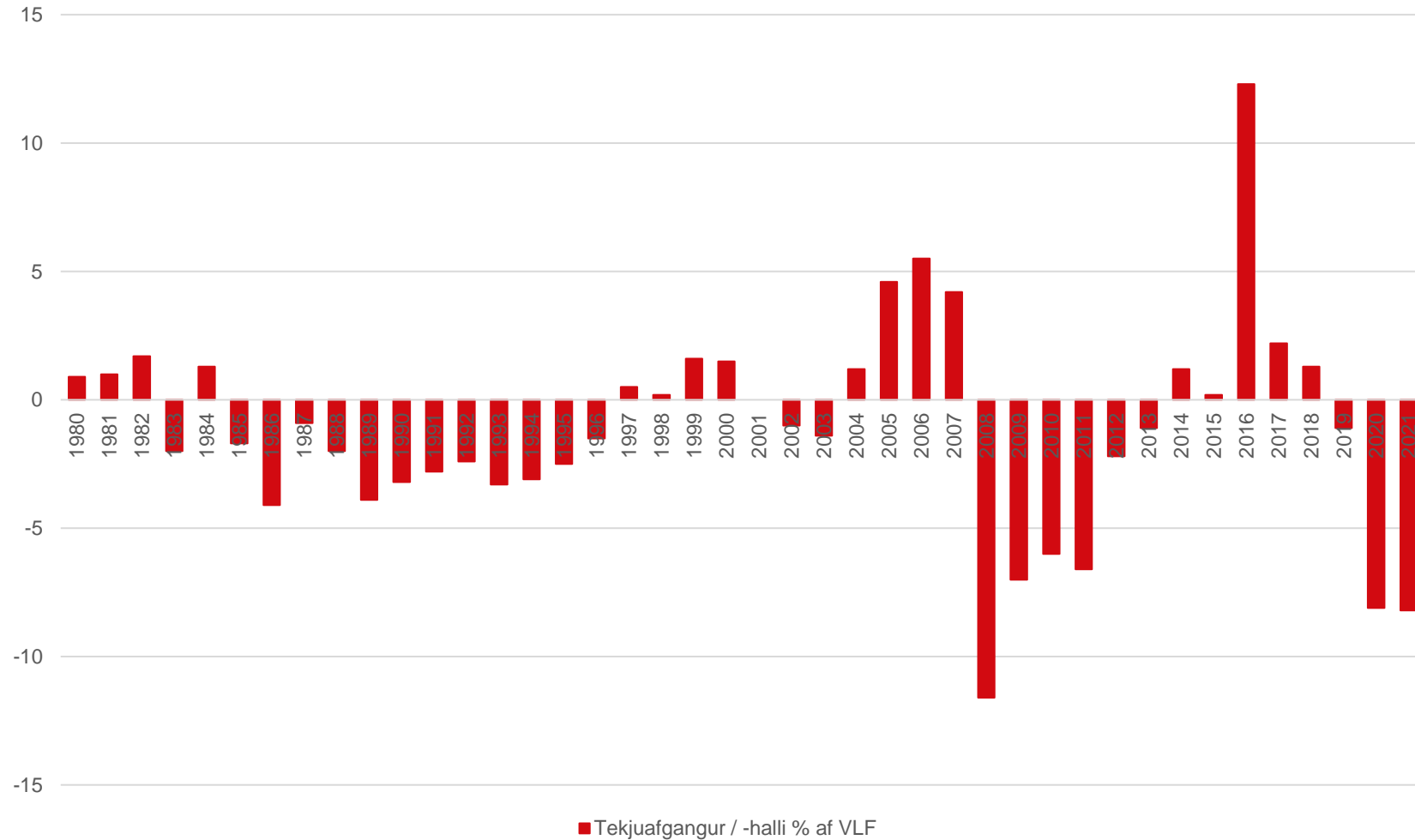


# Hagvöxtur





# Afkoma ríkissjóðs

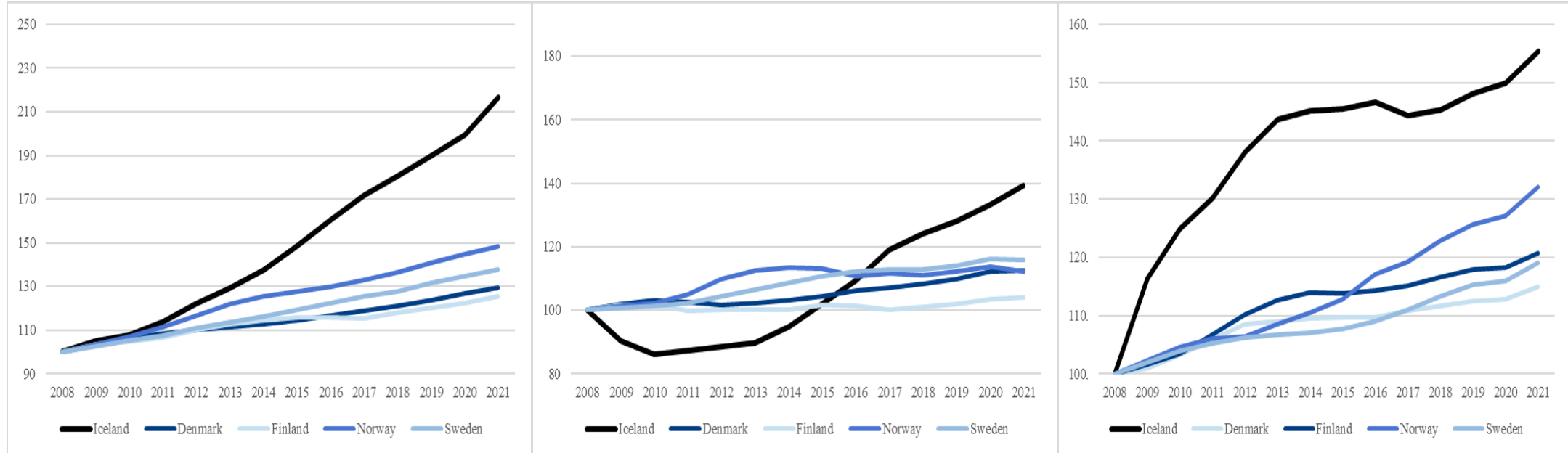


# Þróun launa og kaupmáttar



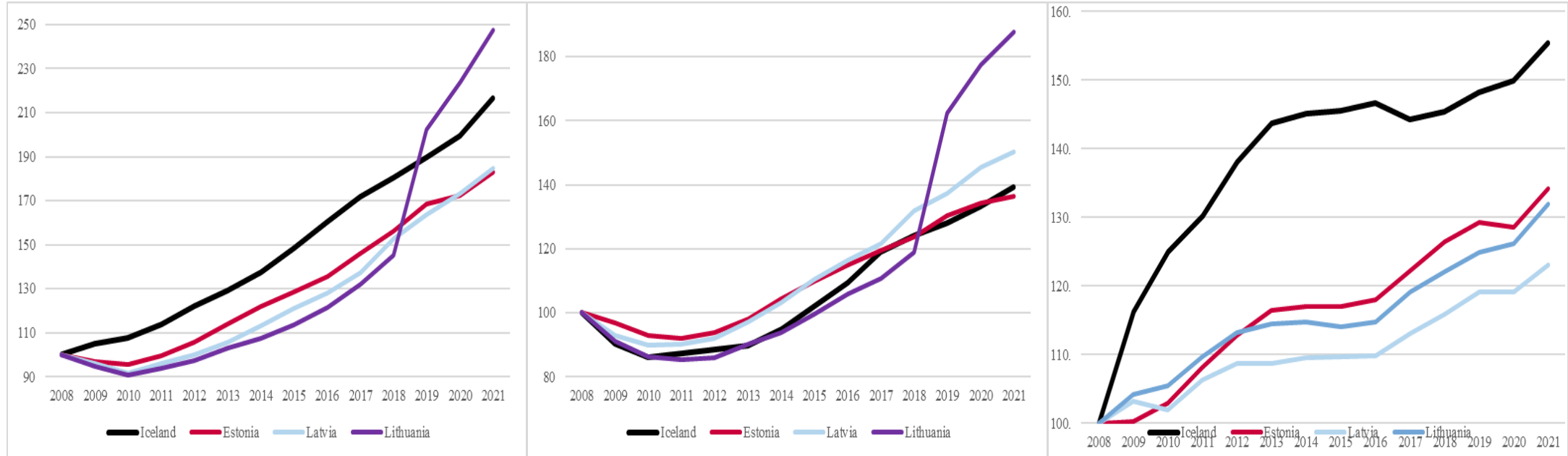


# Launapróun á Norðurlöndunum





# Launapróun á Íslandi og Eyrstrasaltsríkjunum

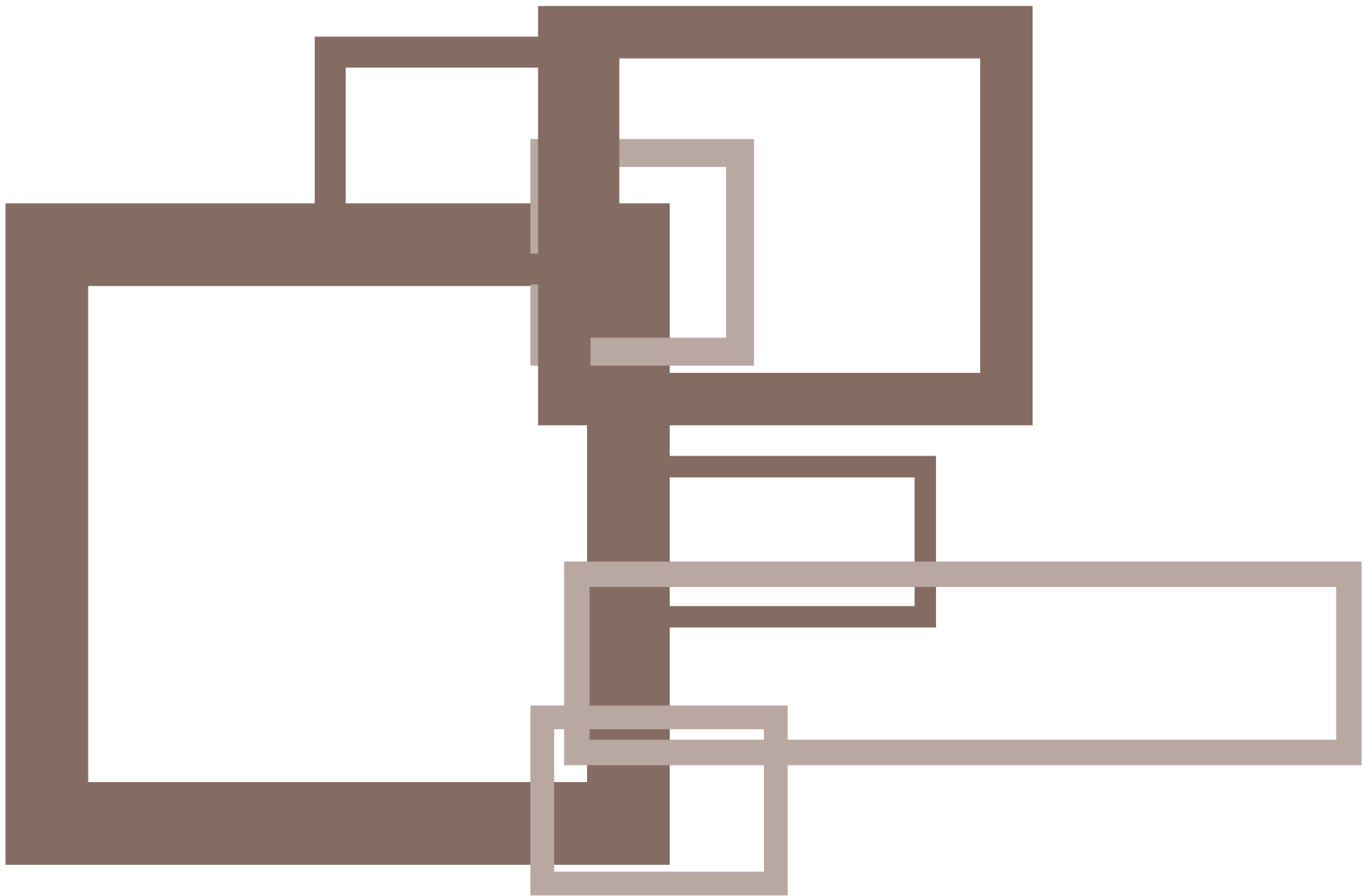


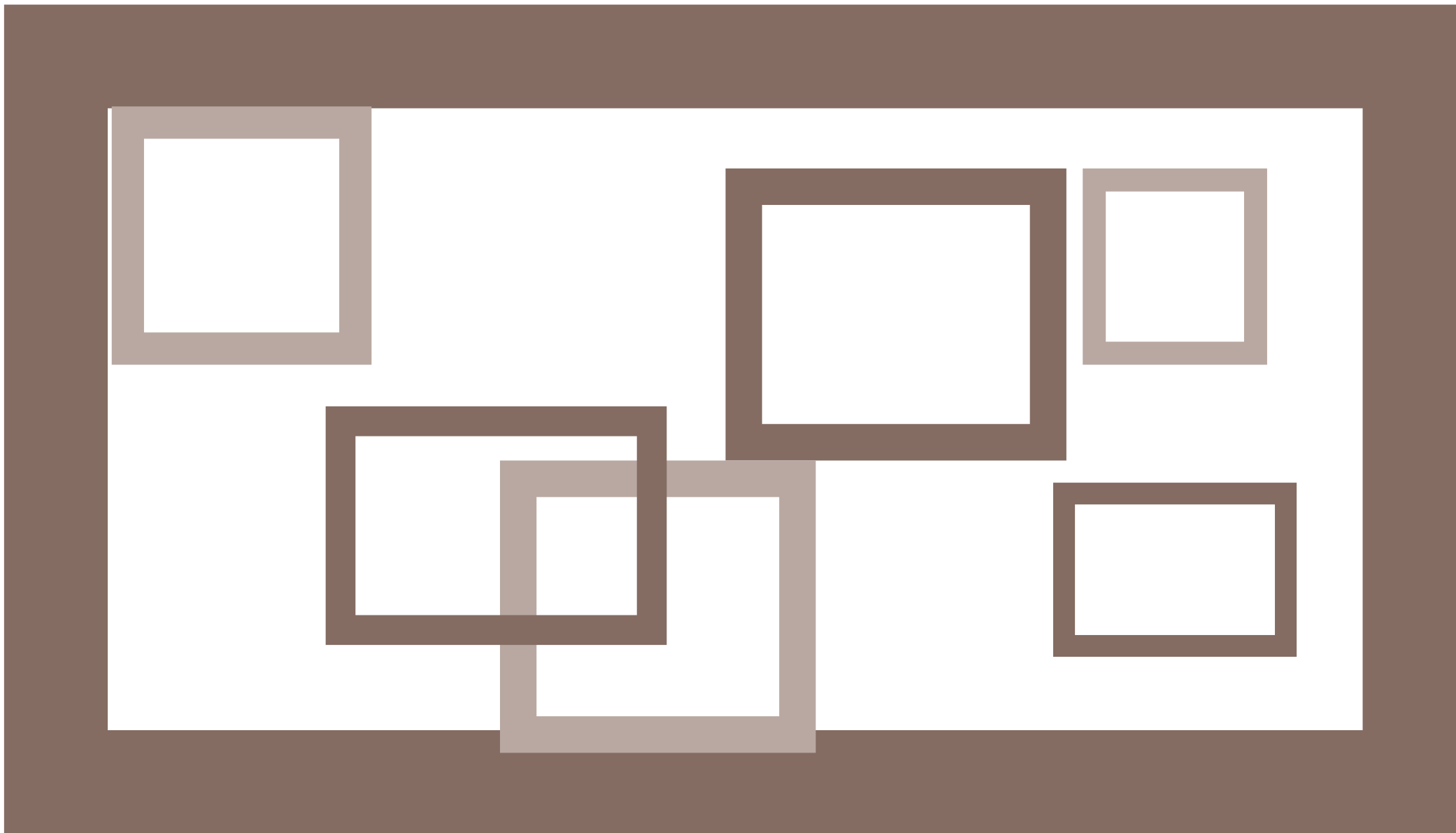


# Hvers vegna meiri launahækkanir en ekki meiri kaupmáttaraukning?

- Staða Íslands í alþjóðahagkerfinu
- Hagstjórn
  - Fjármálastjórn
  - Peningamálastjórn
- Kjarasamningsumhverfið







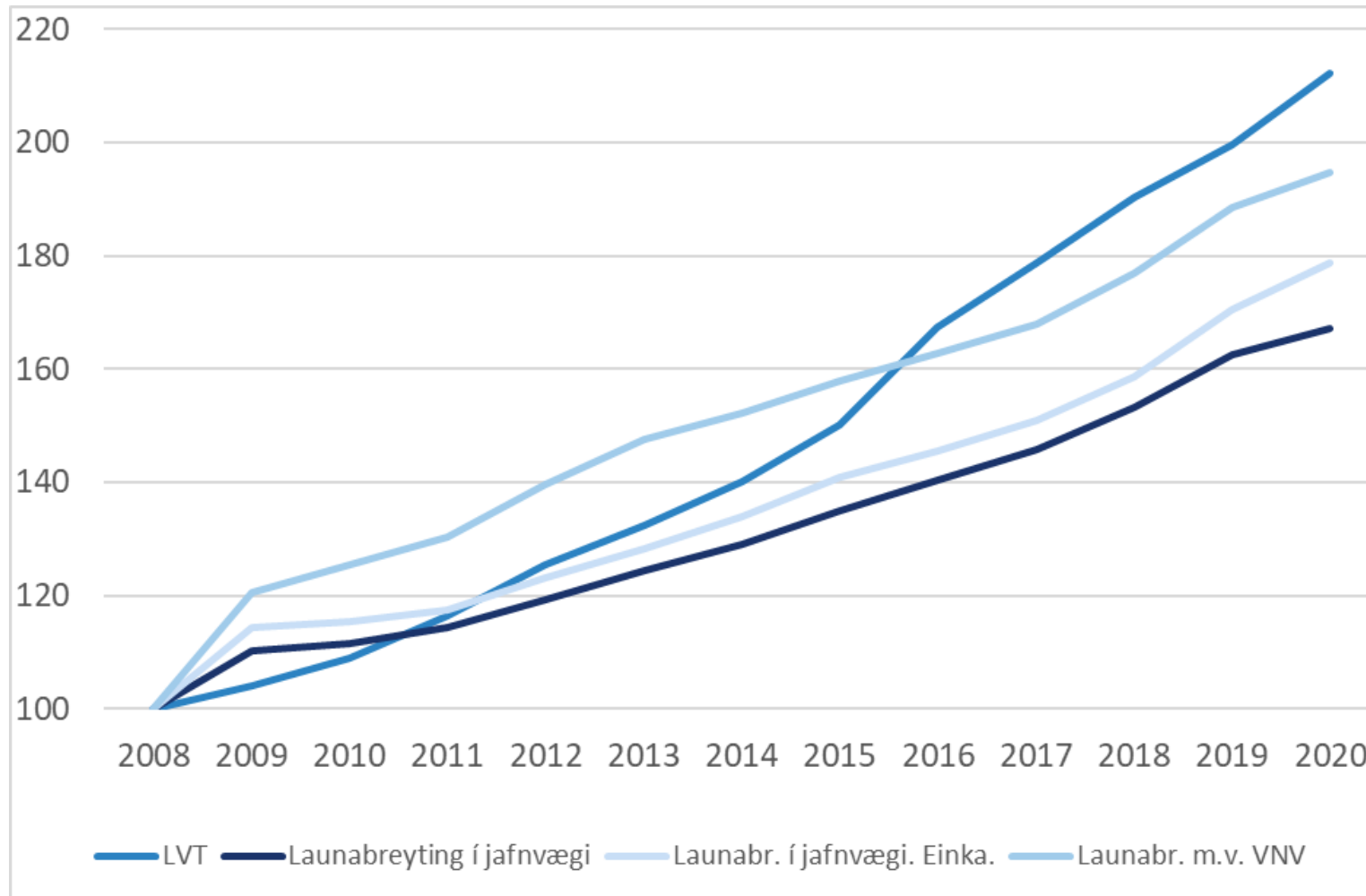


# Hvernig er hægt að bæta samninga?

- Efla traust
- Bæta gæði og úrvinnslu gagna
  - KTN
  - Norska leiðin
- Auka fræðslu og þjálfun samningafólks
- En fyrst og fremst þarf að setja ramma sem aðilar skuldbinda sig til að standa við.

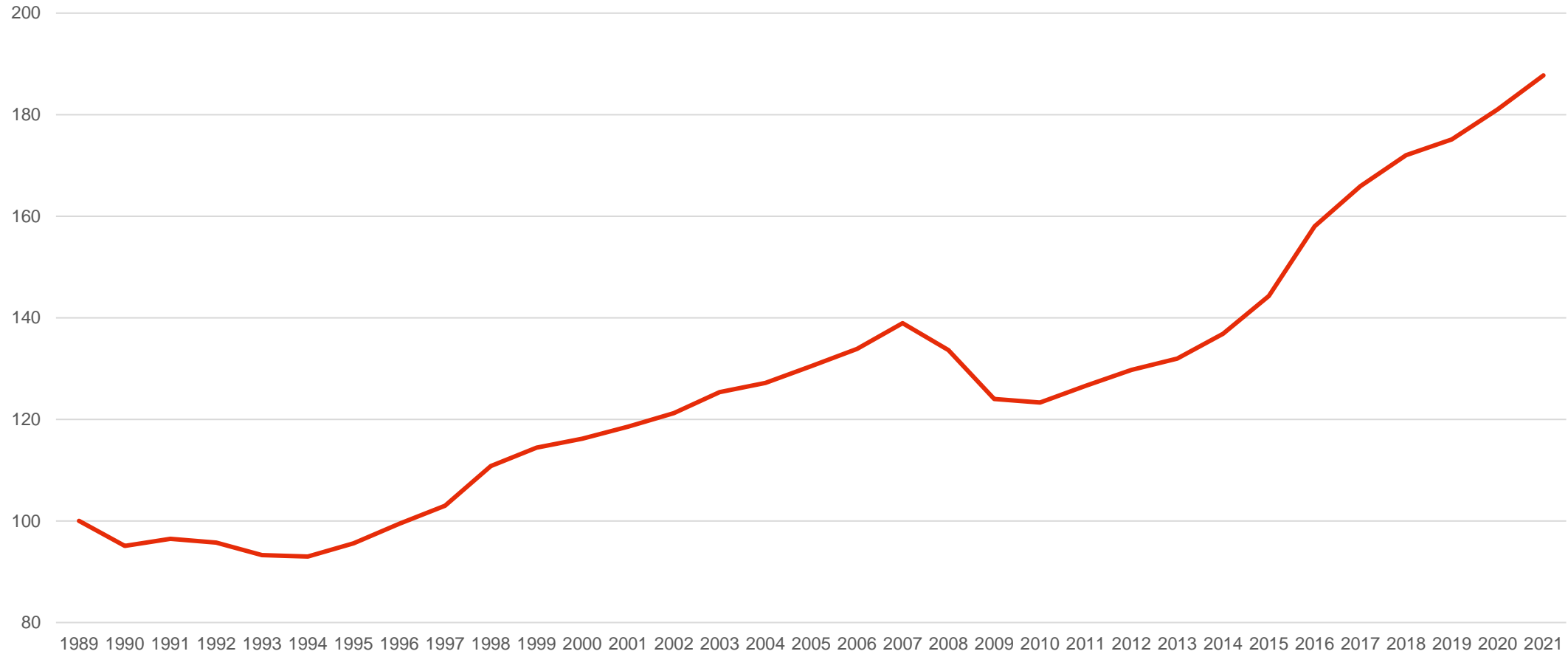


# Launapróun m.v. mismunandi forsendur



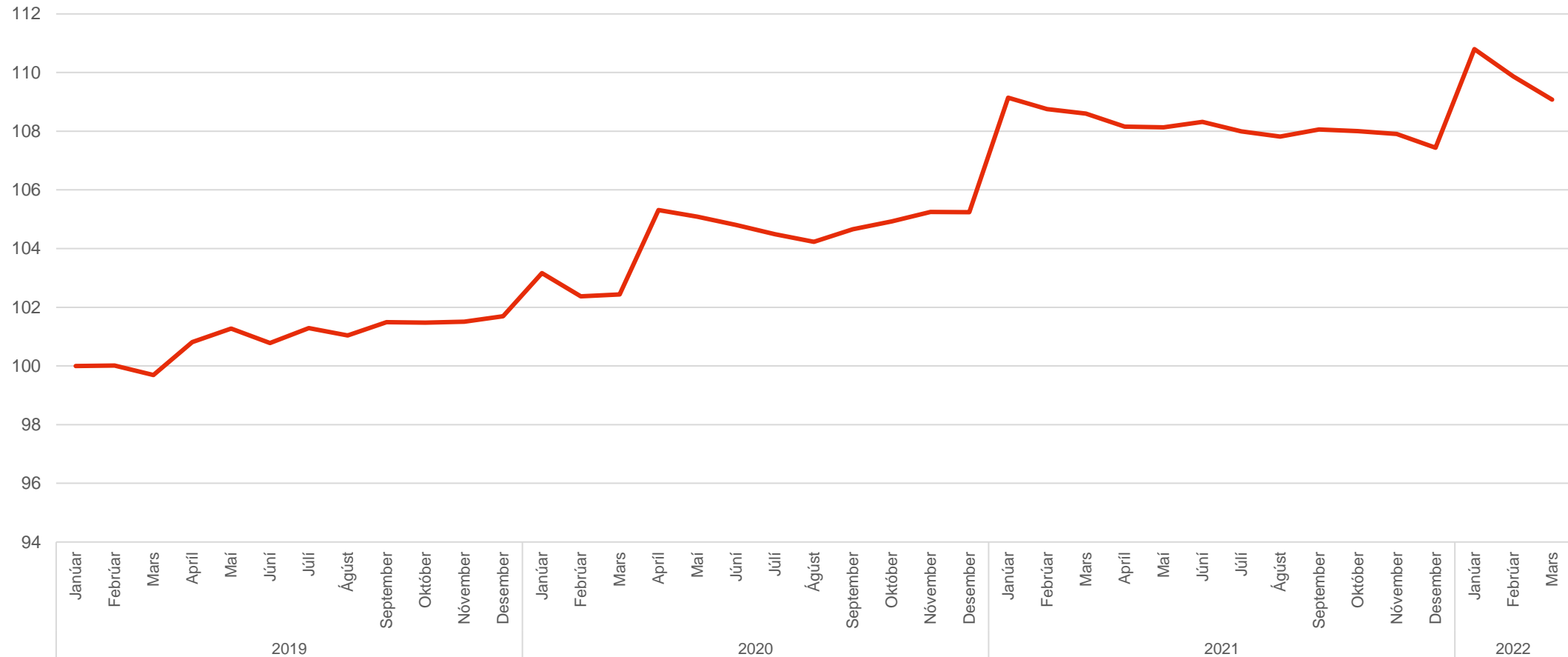


# Kaupmáttarþróun





# Kaupmáttarþróun á samningstímabilinu



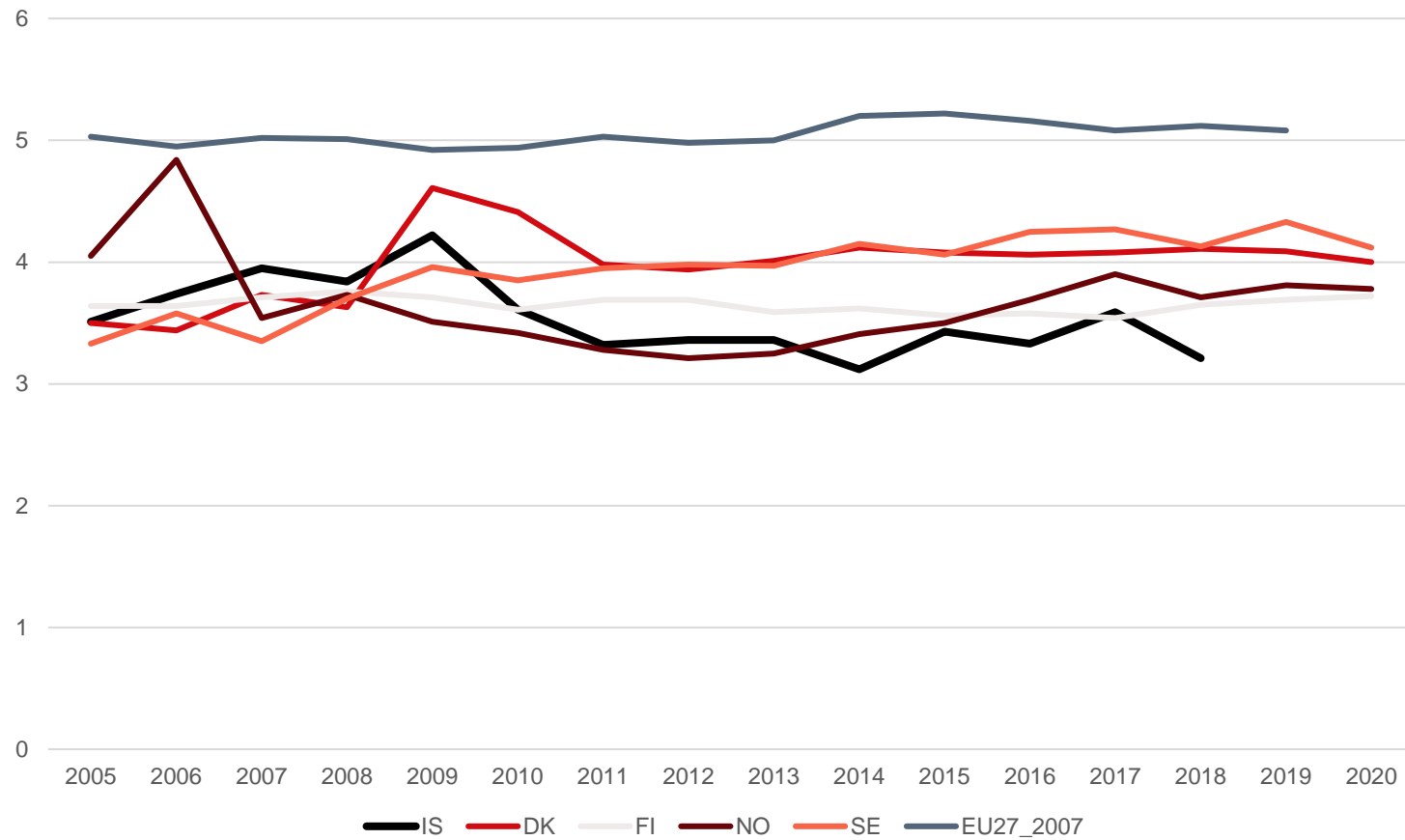


# Staða

- Sparnaður heimilanna
- Skuldir heimilanna
- Launadreifing minni hér en víðast annars staðar
- Lágtekjuhlutfall einnig



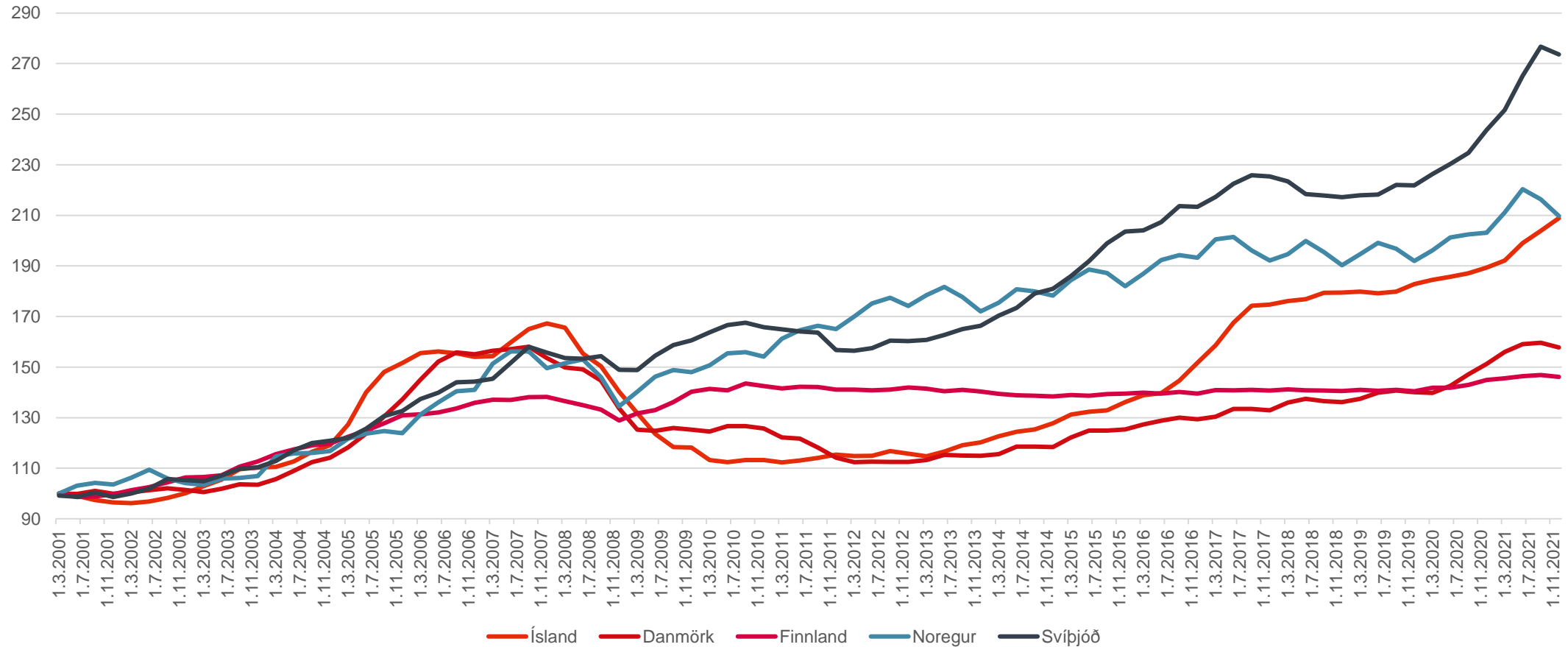
# Fimmtungastuðull





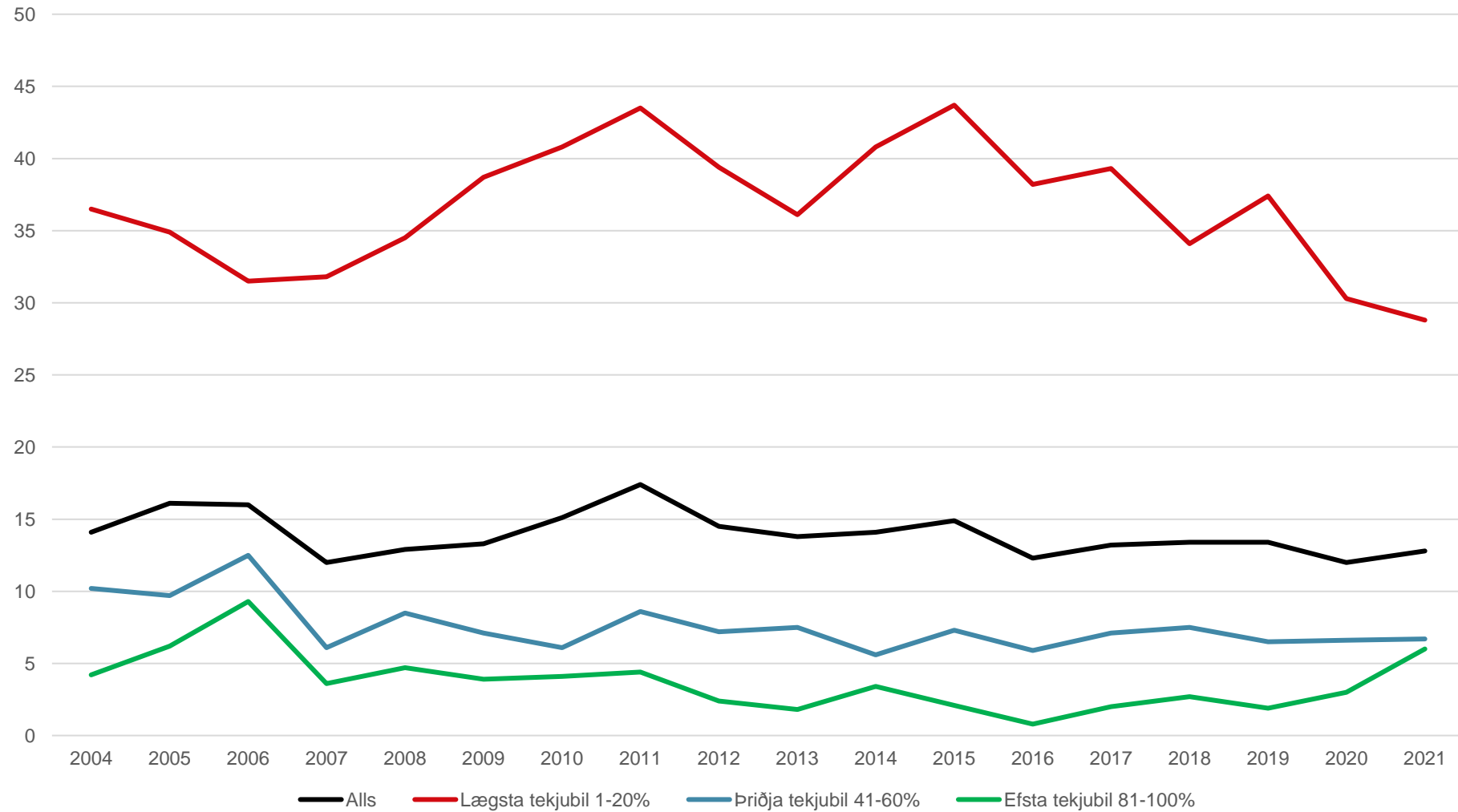


# Raunverð húsnaðis





# Íþyngjandi húsnæðiskostnaður

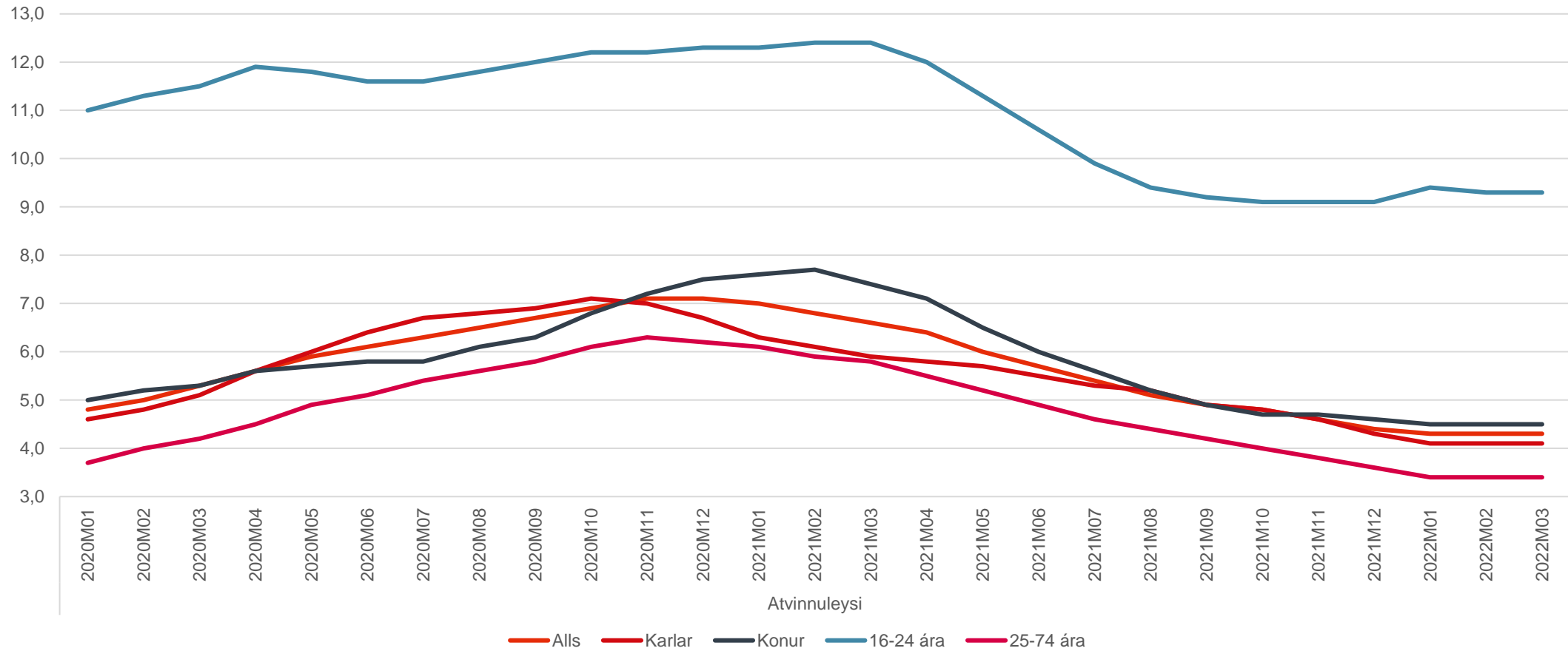


# Áhrif Covid-19 á vinnumarkað



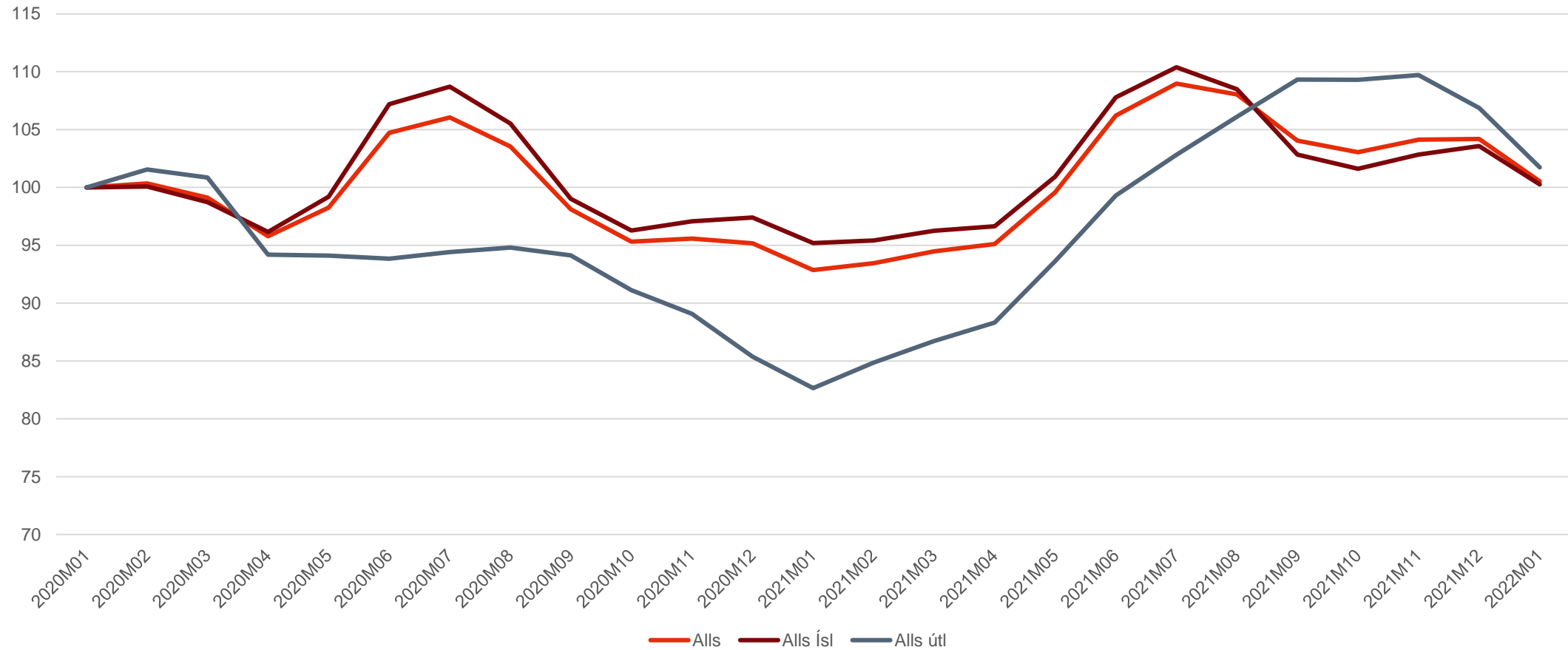


# Atvinnuleysi



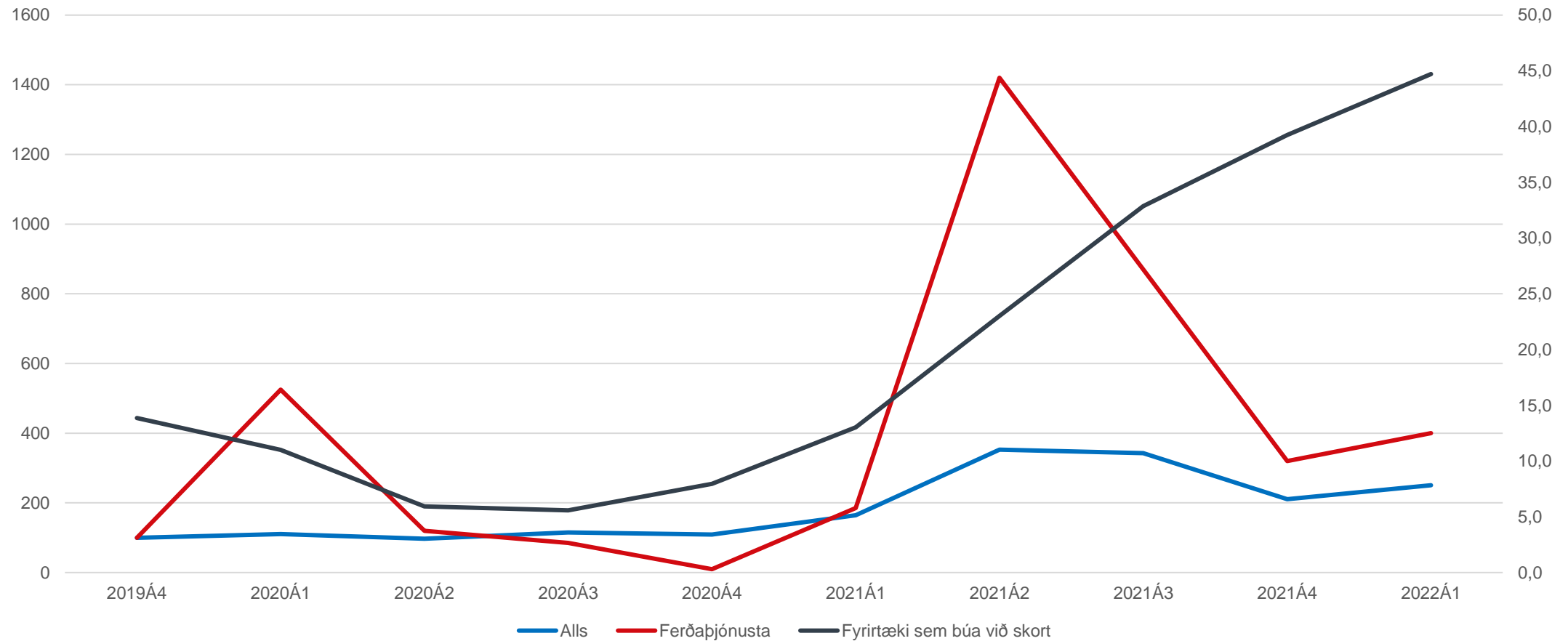


# Fjöldi starfandi eftir ríkisfangi





# Laus störf og hlutfall fyrirtækja sem búa við skort á starfsfólki





# Horft lengra fram á veginn

- Líklegt að margt breytist á næstu árum/áratugum
- Sjálfvirknivæðing
- Gervigreind
- Harkhagkerfi
- Skortur á vinnuafli, t.d. í umönnun
- Pólun (e. polarization) eða uppfærsla (e. upskilling)
- Staða jaðarhópa – innflytjendur, minna menntaðir einstaklingar, konur



# Um hvað er hægt að semja?

- Styttri vinnuvika
- Kulnun og endurkoma á vinnumarkað
- Sí- og endurmenntun
- Fjarvinna eftir Covid-19
- Umönnunartímabilið frá fæðingarorlofi til leikskóla
- Aðgerðir sem taka til einstakra hópa





**Takk fyrir mig!**

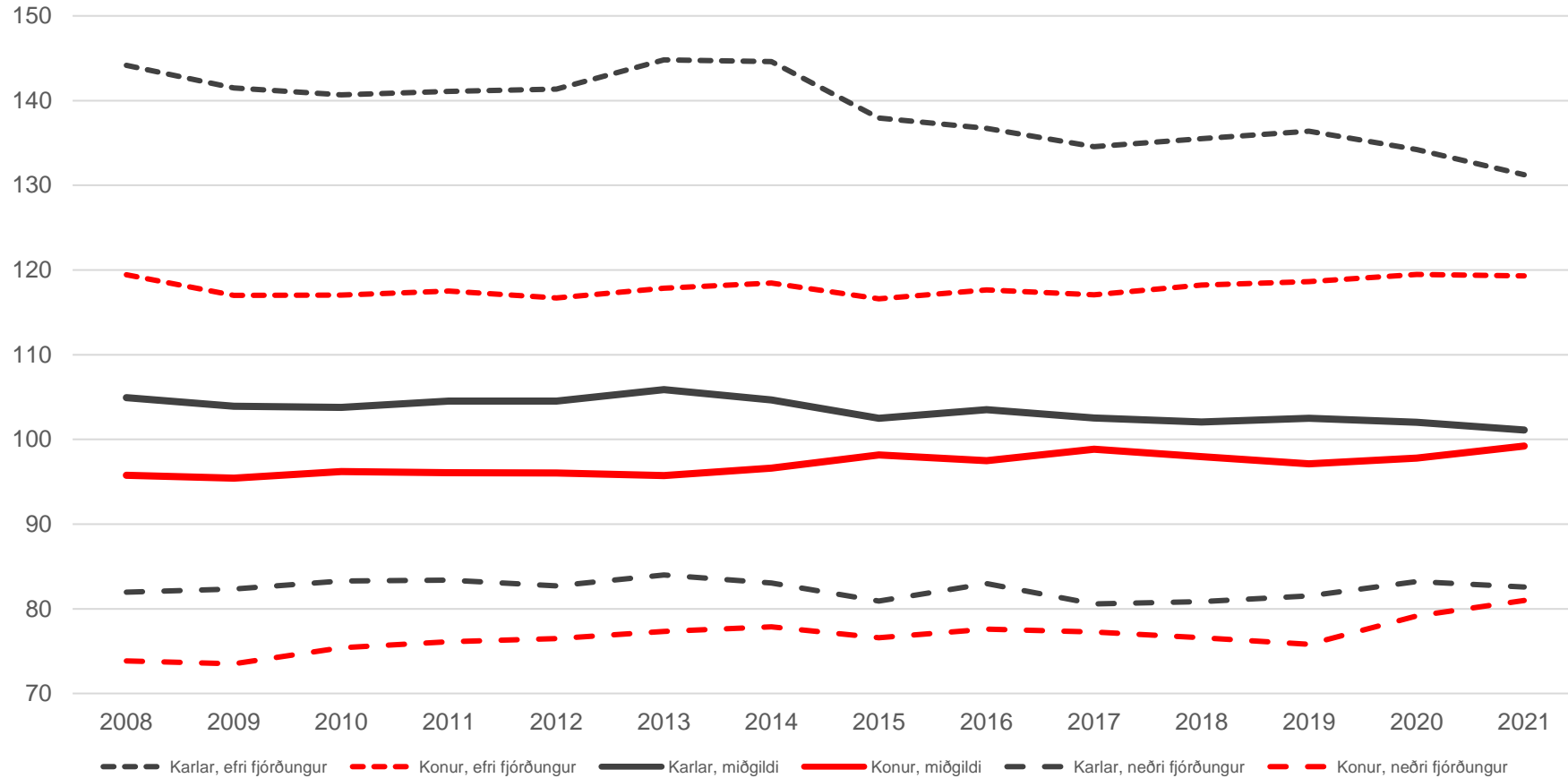


# Viðauki



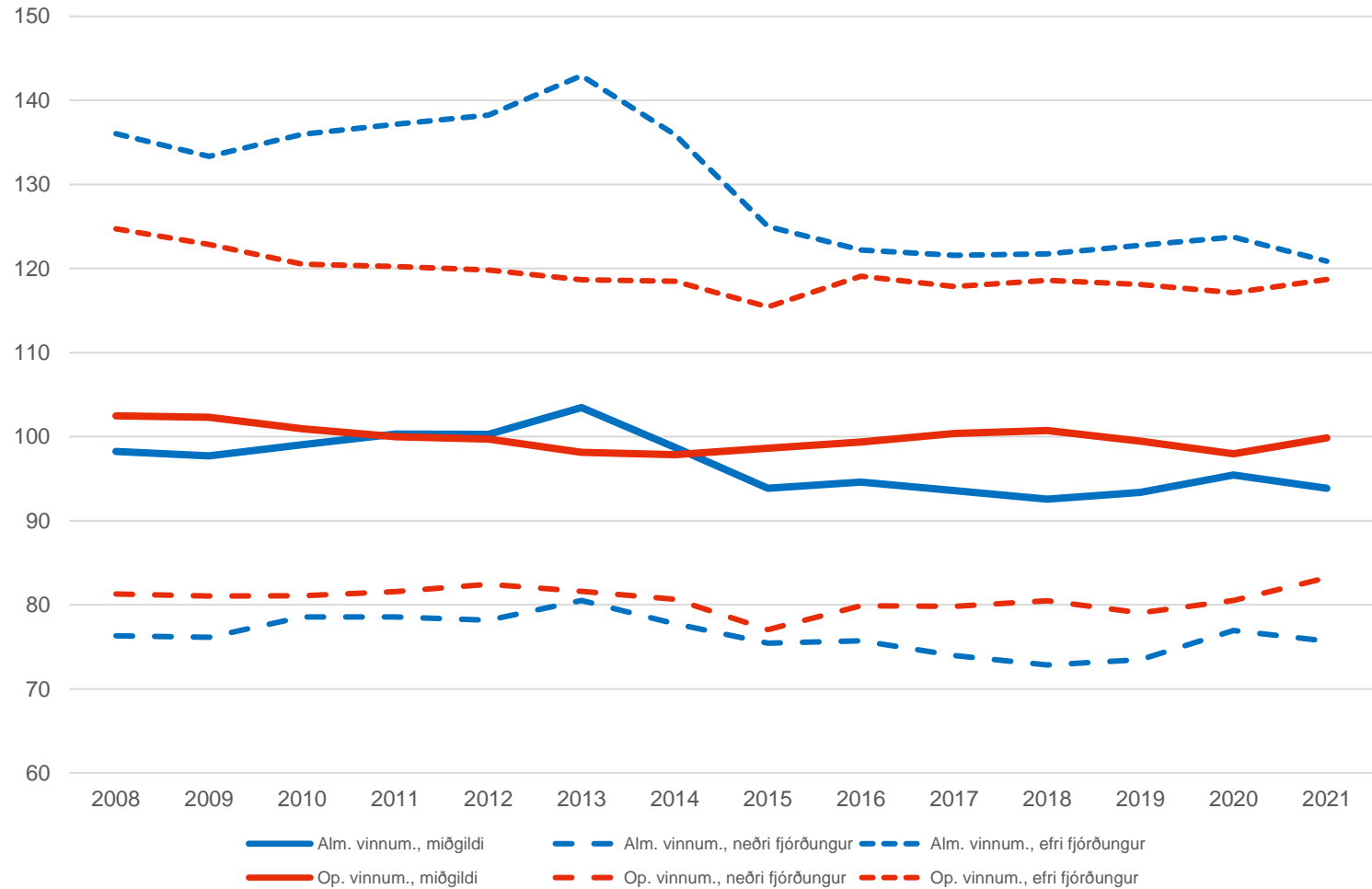


# Launadreifing eftir kyni



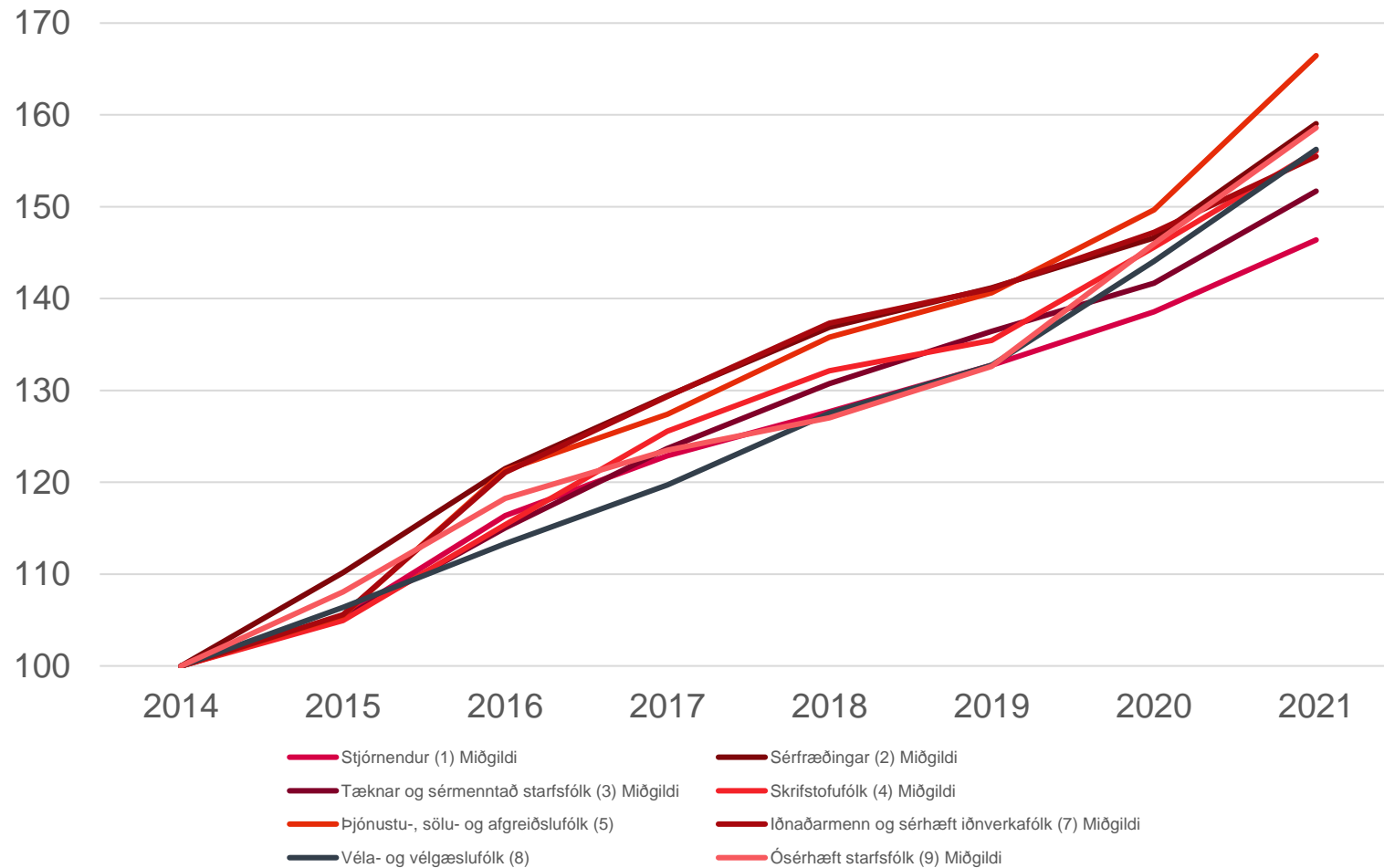


# Launapróun eftir mörkuðum



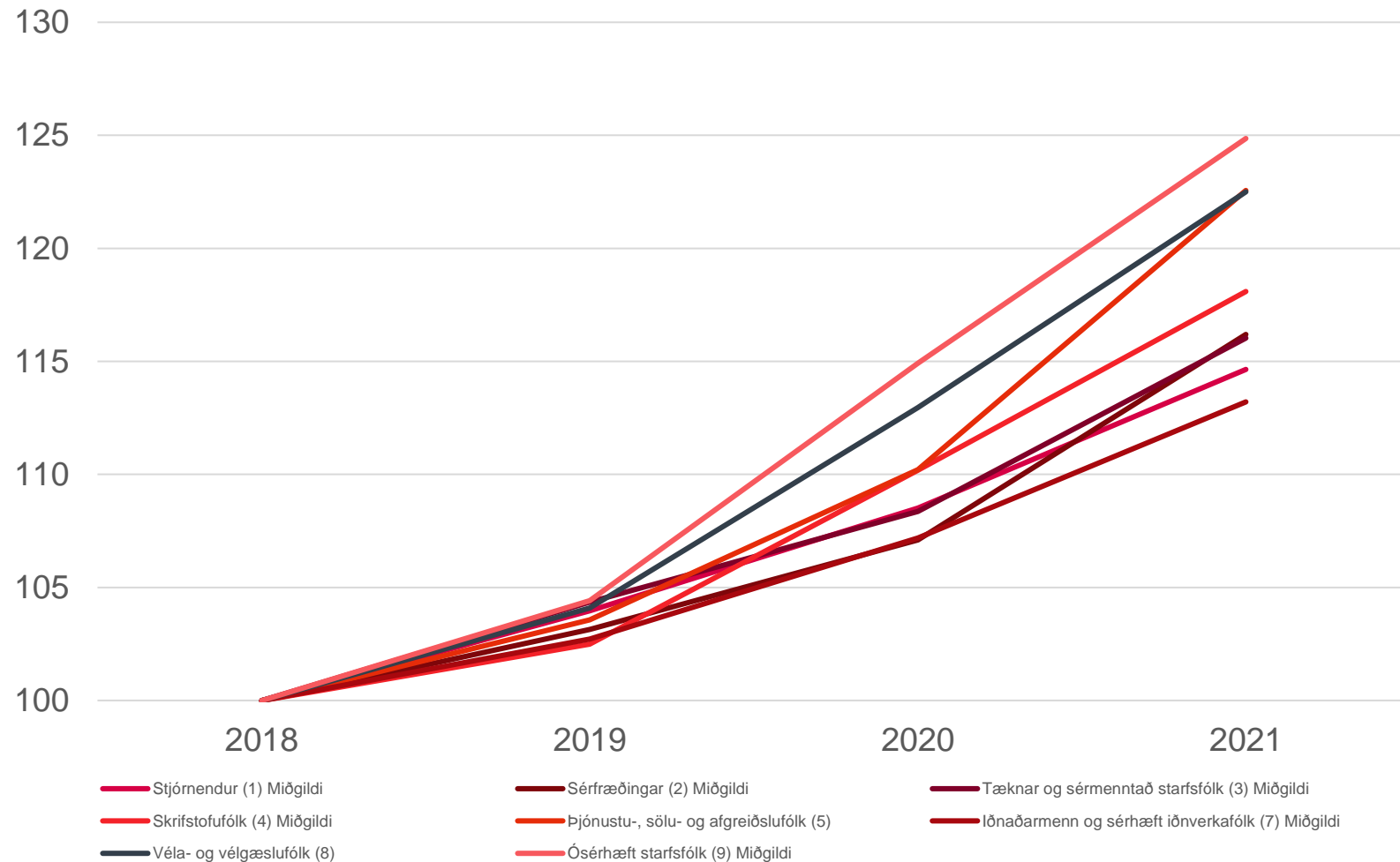


# Launapróun eftir launþegahópi



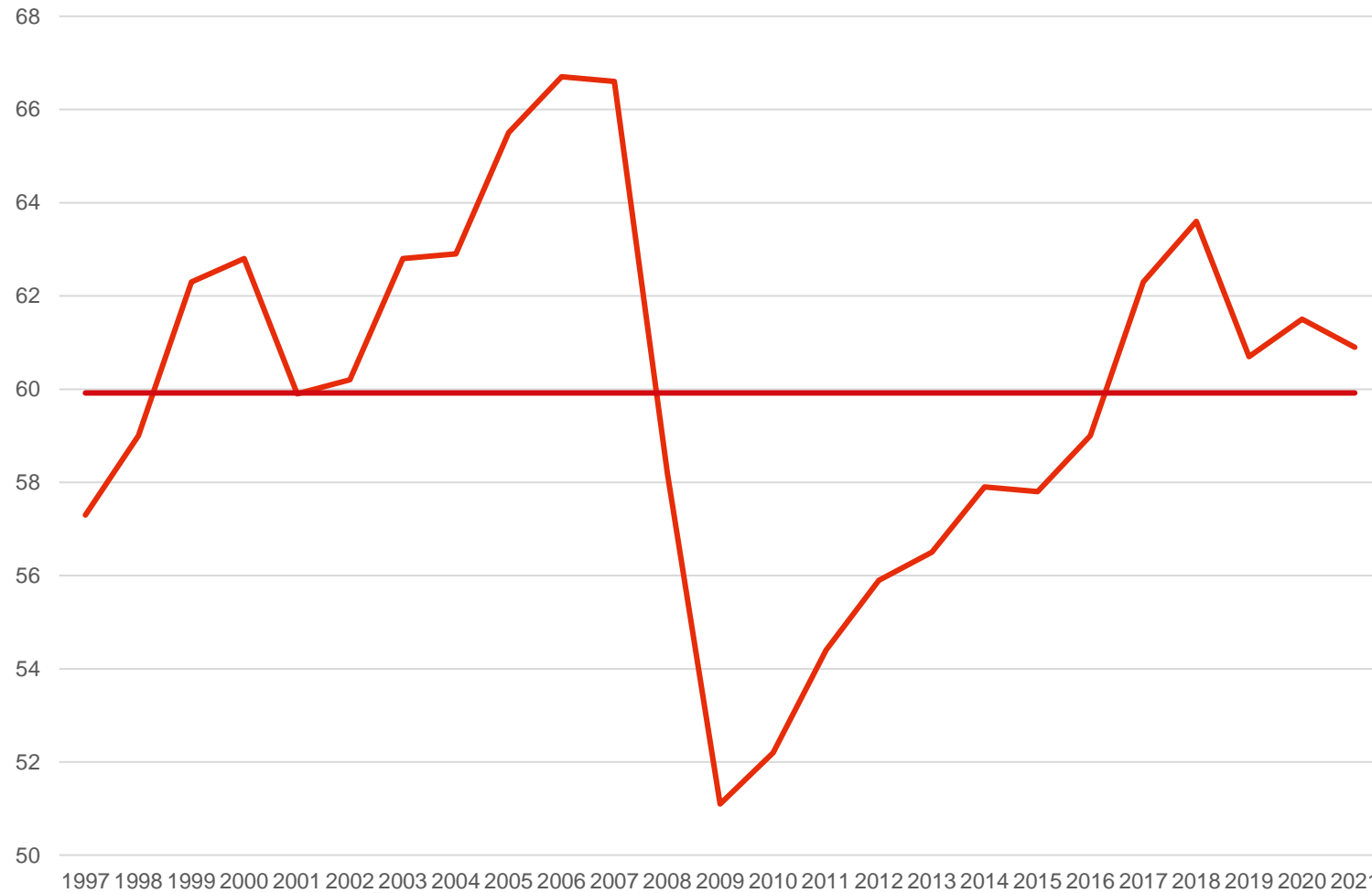


# Launapróun eftir launþegahópi



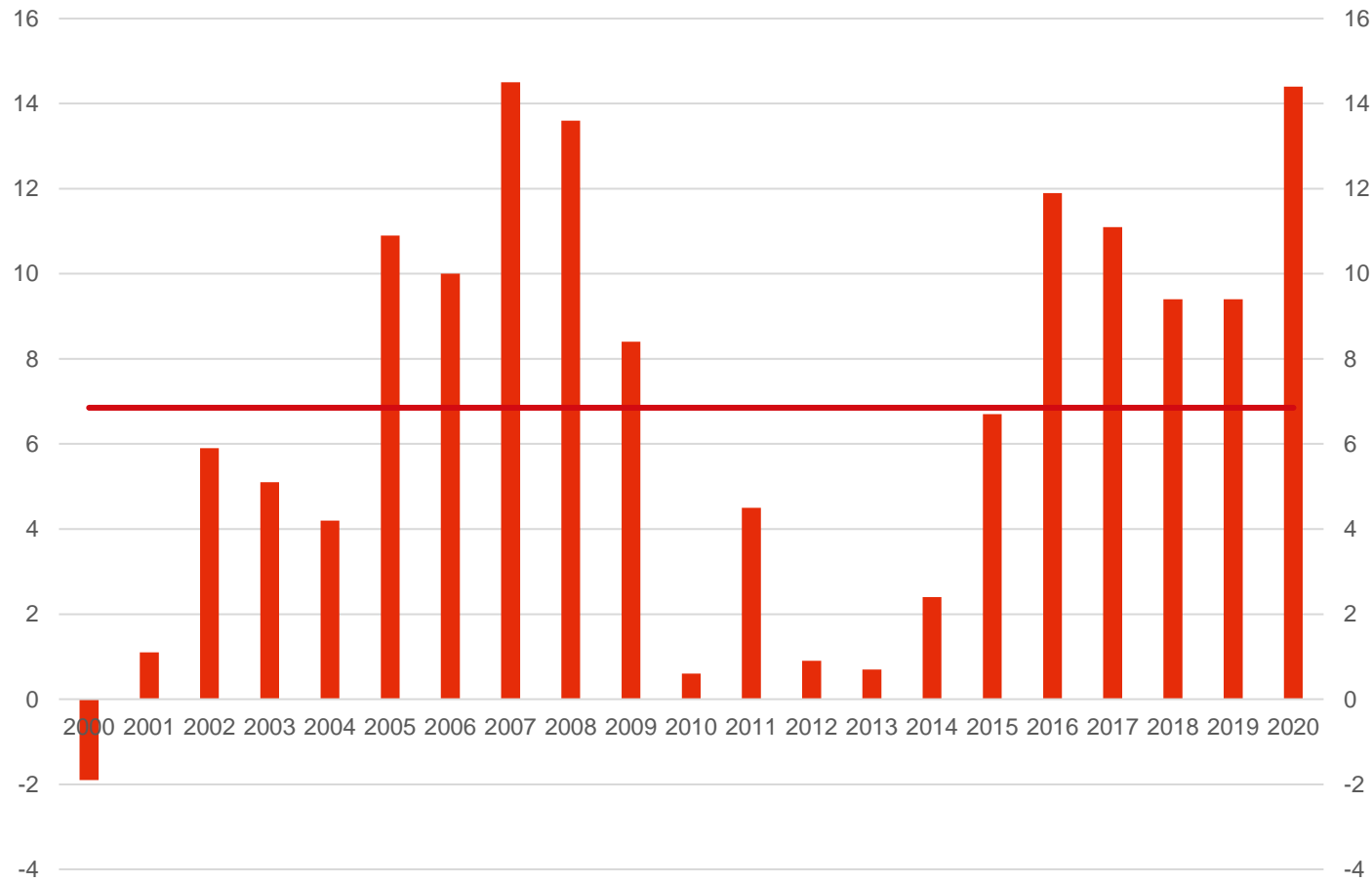


# Launahlutfall





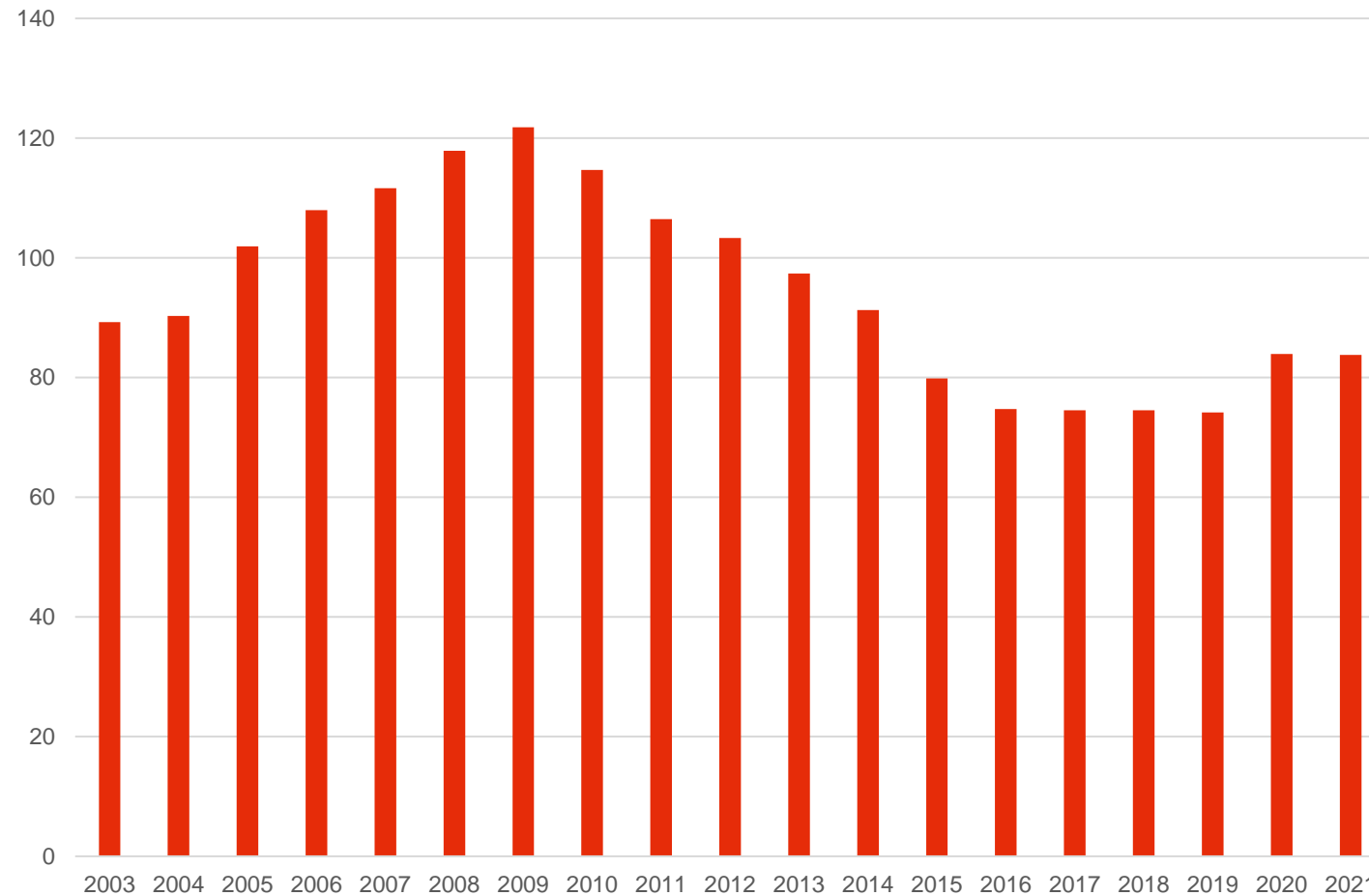
# Vergur sparnaður heimilanna





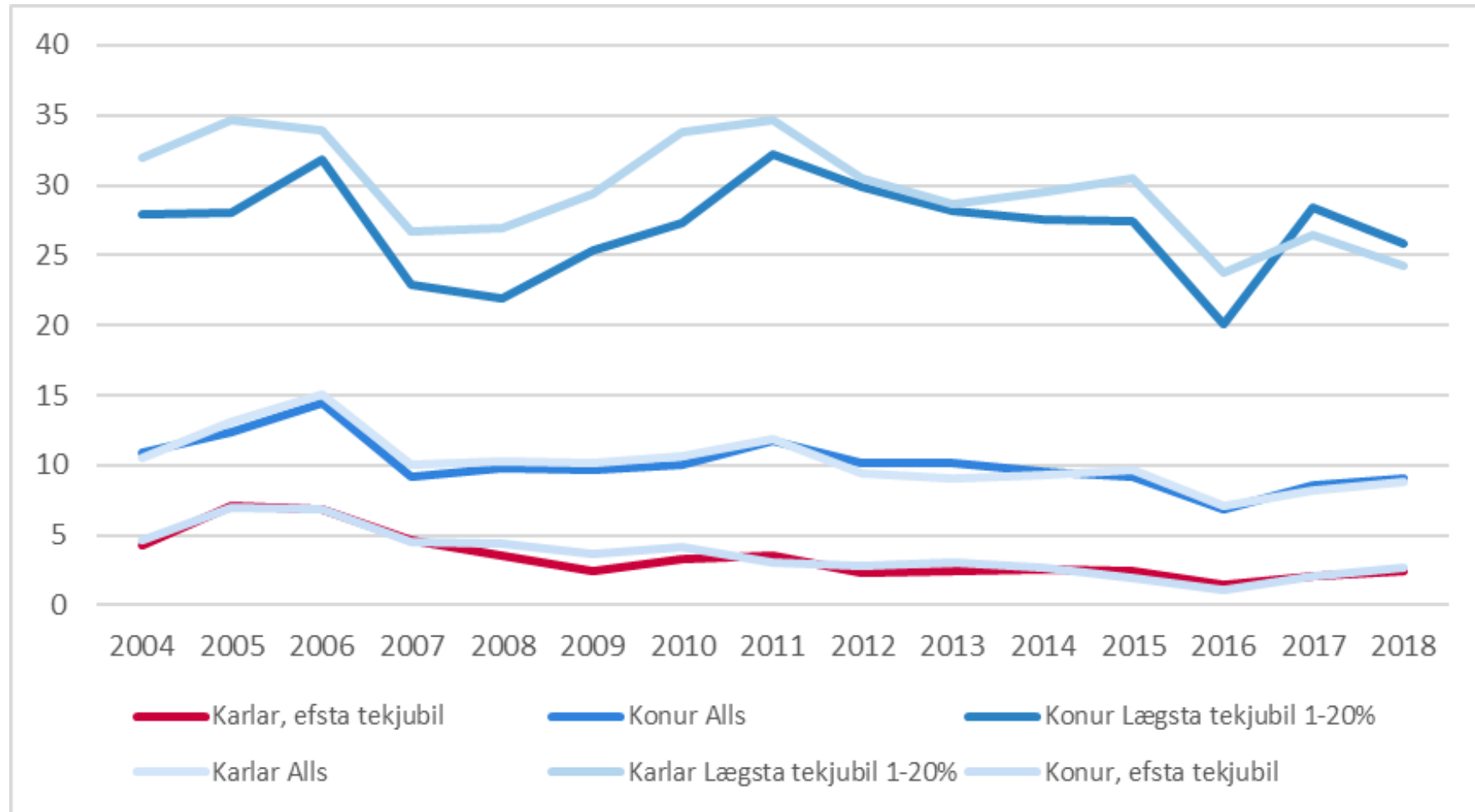


# Skuldir heimilanna



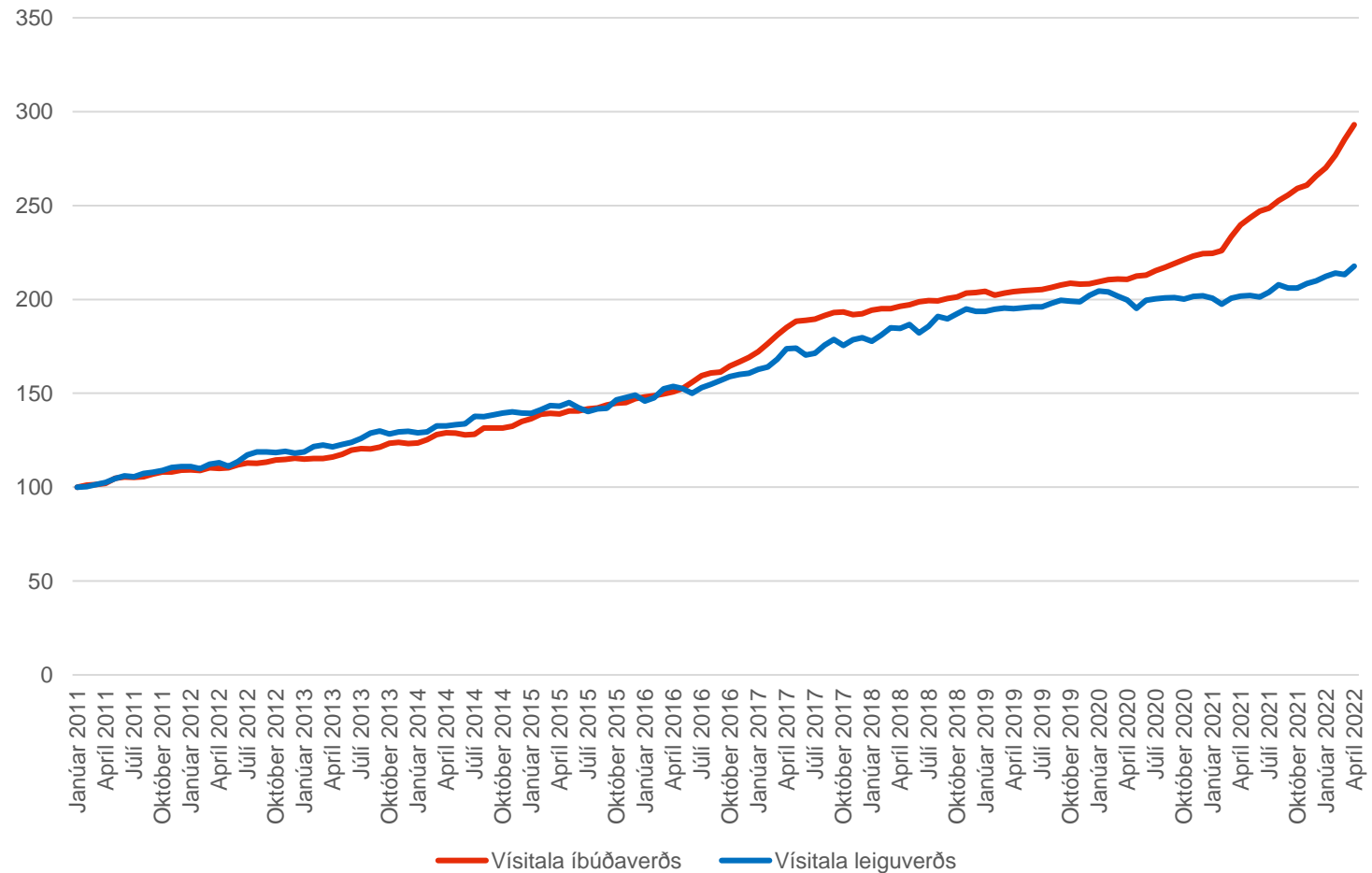


# Íþyngjandi húsnæðiskostnaður



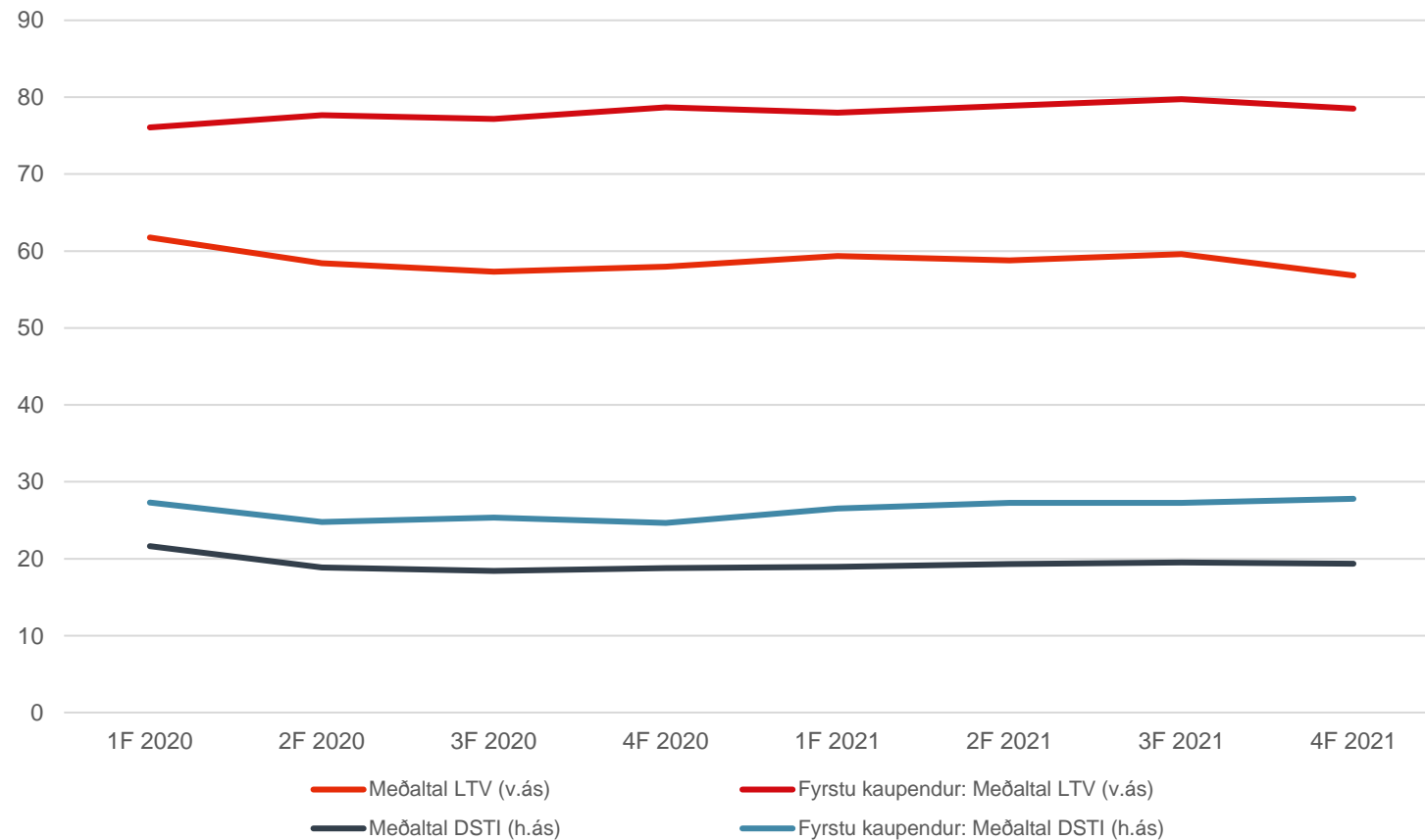


# Kaupverð vs. leiguverð



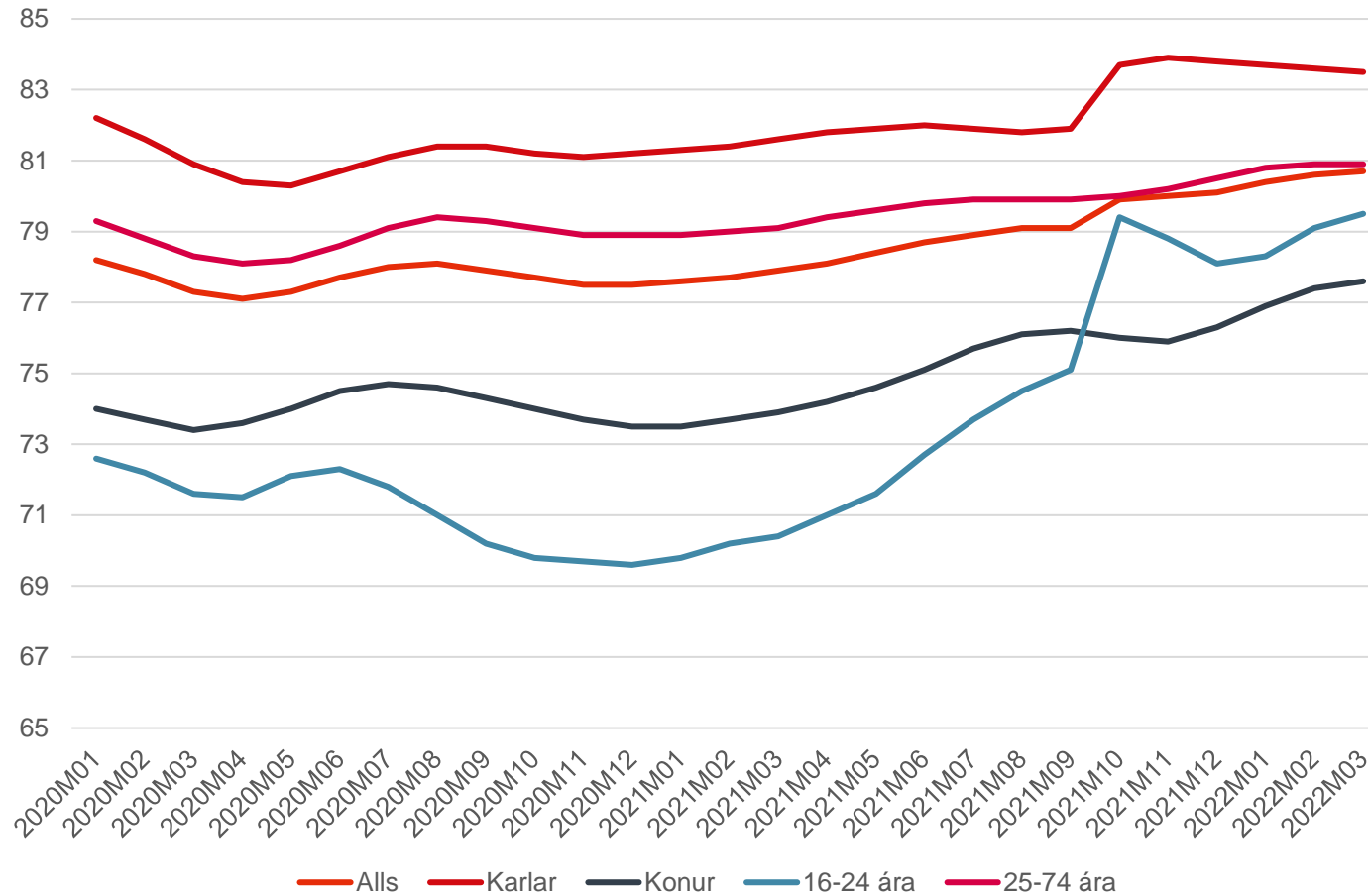


# Veðsetningar- og greiðslubyrðarhlutfall



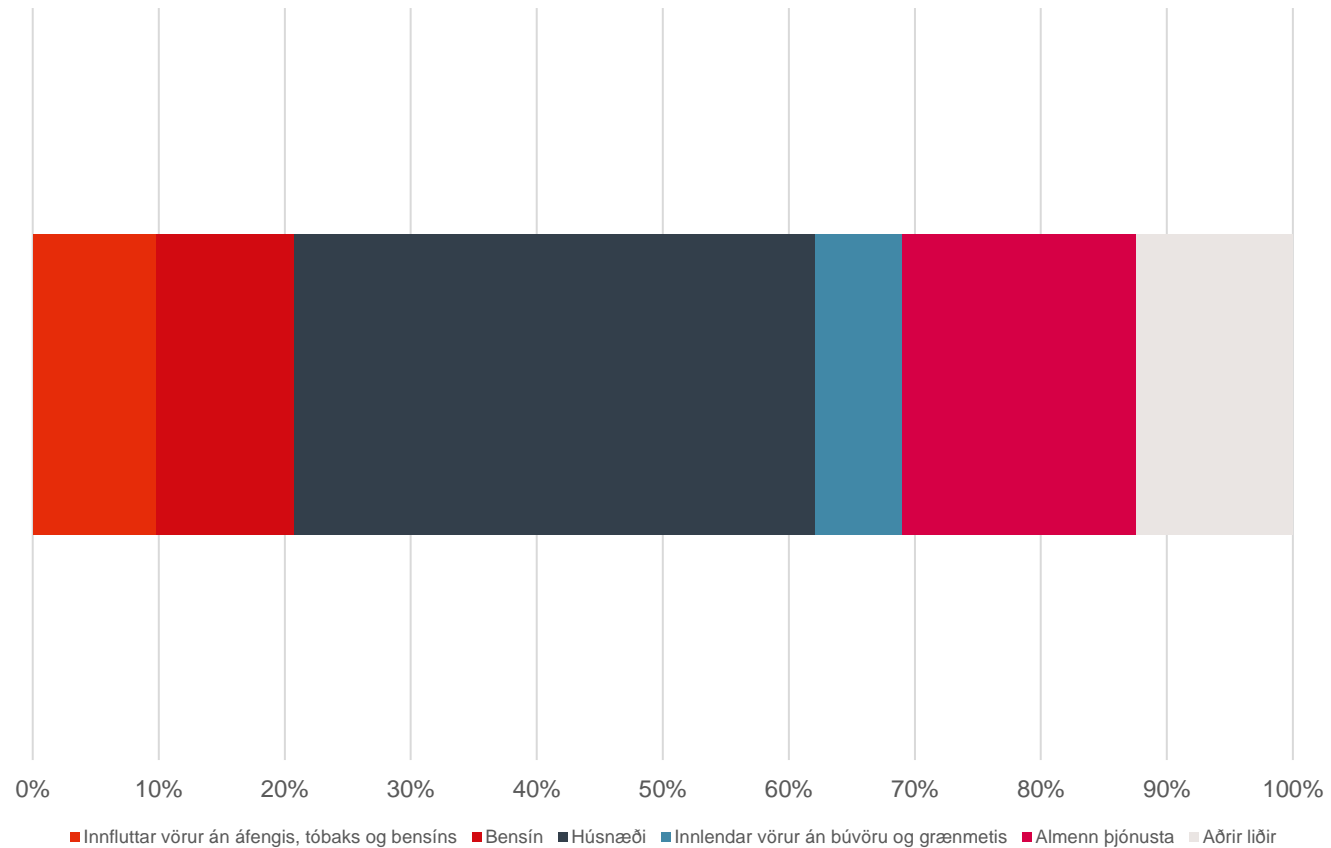


# Atvinnuþátttaka í Covid



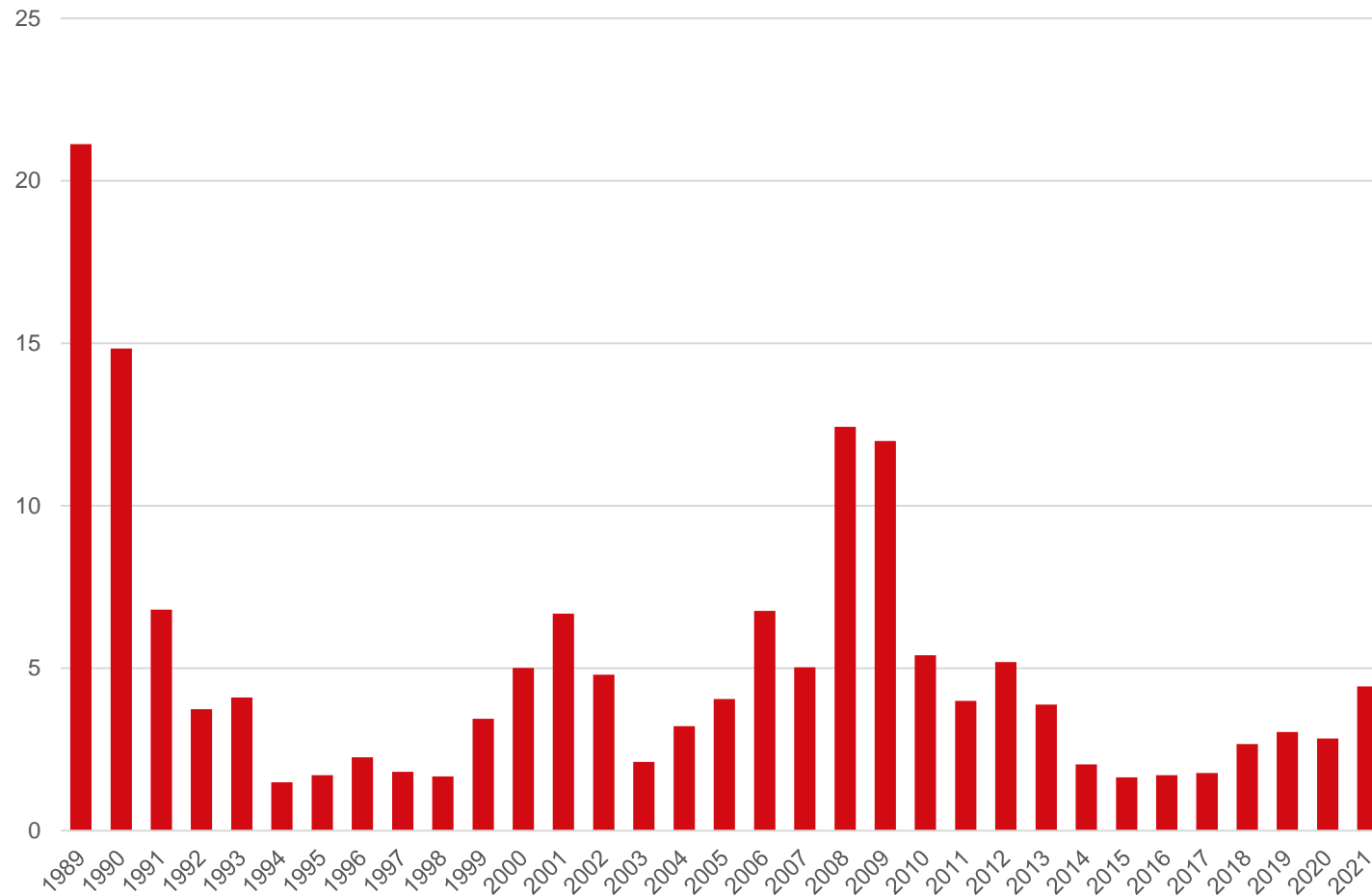


# Verðbreyting síðustu tólf mánuði



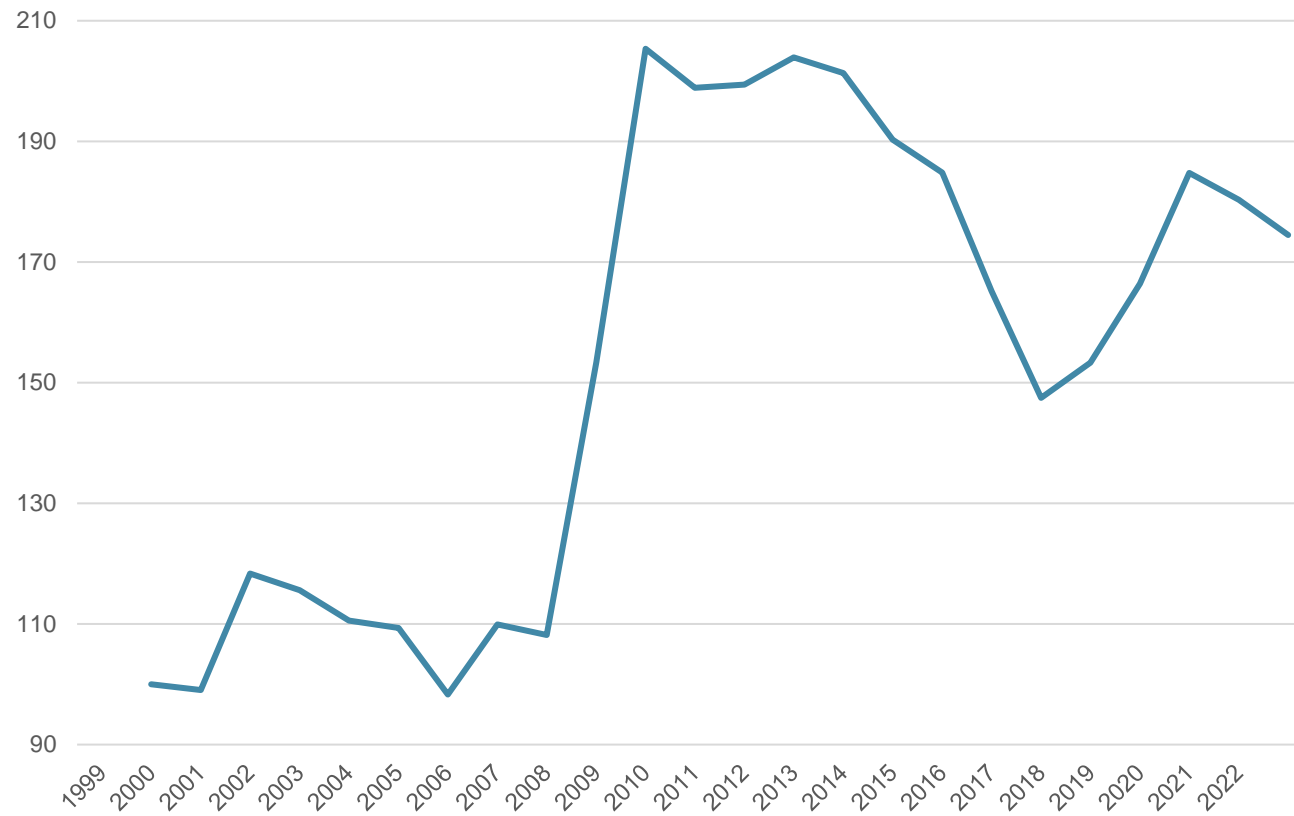


# Verðbólga





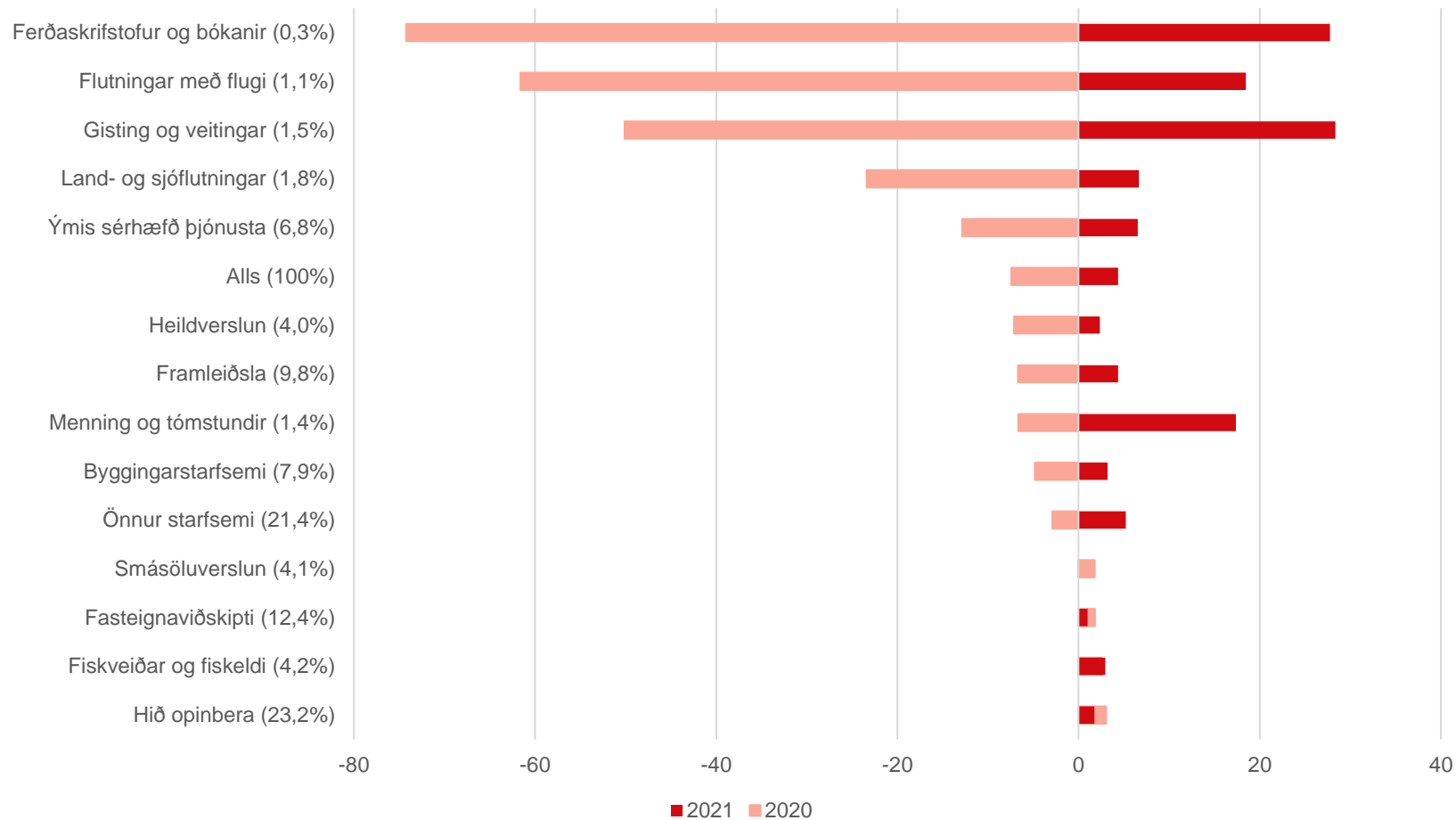
# Gengisvísitala





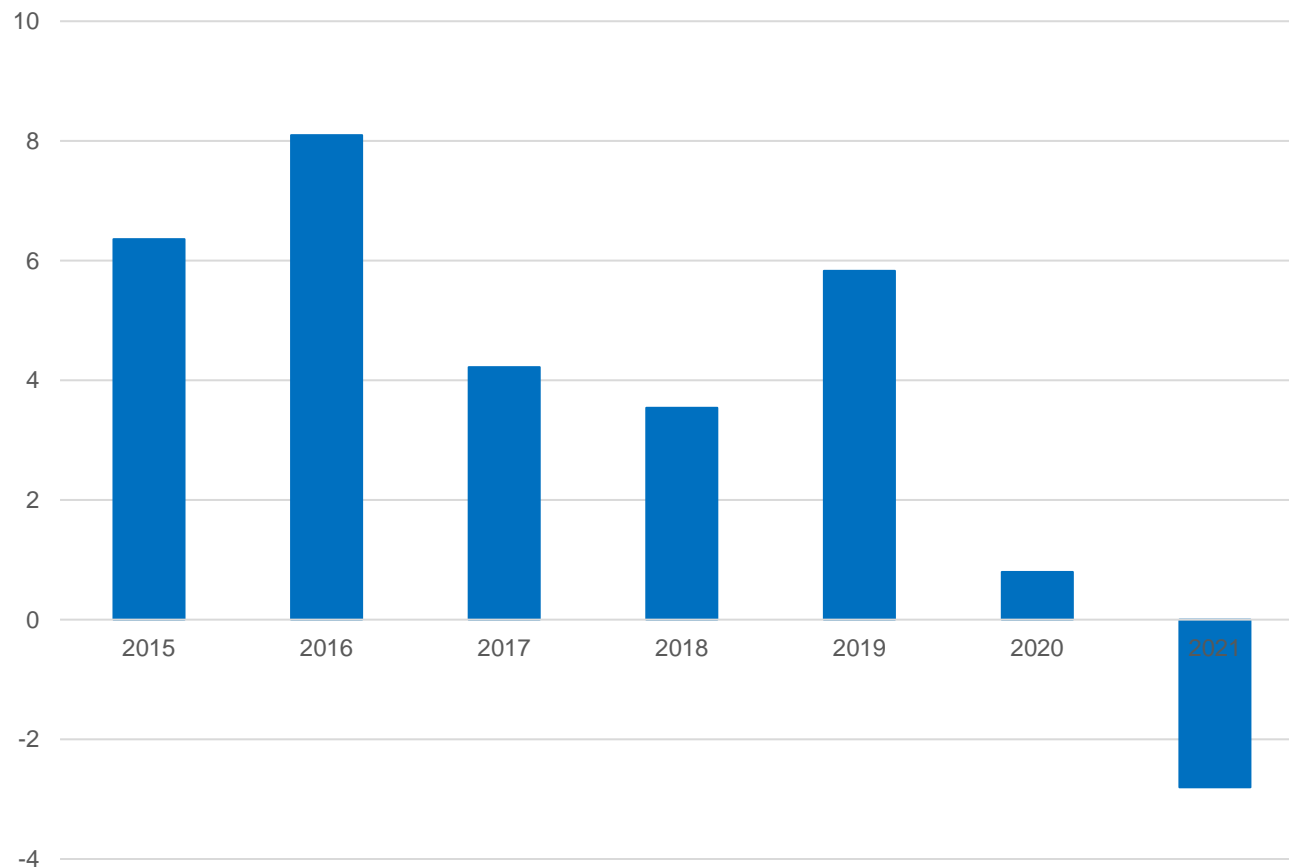


# Breyting í vergum þáttatekjum



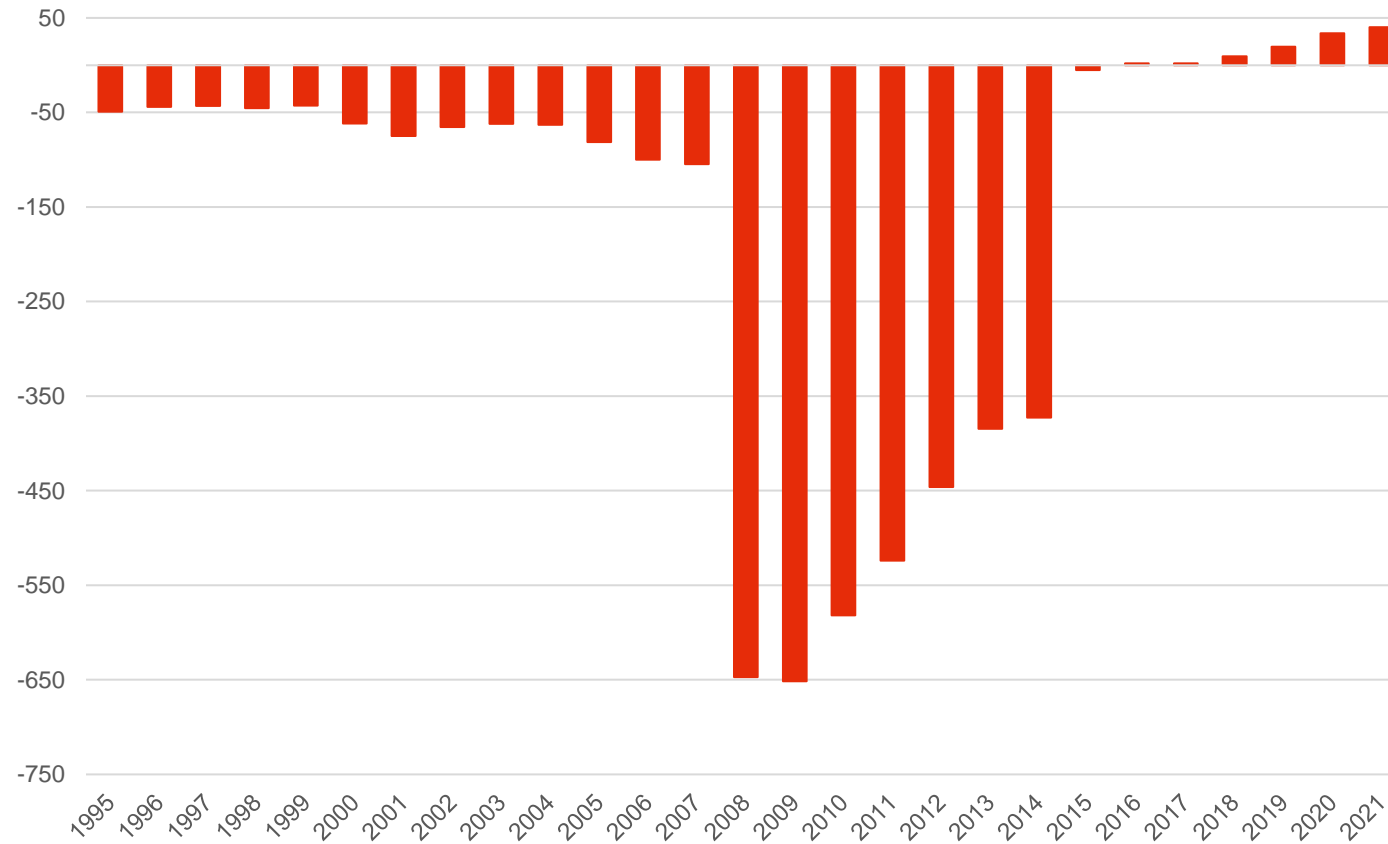


# Viðskiptajöfnuður



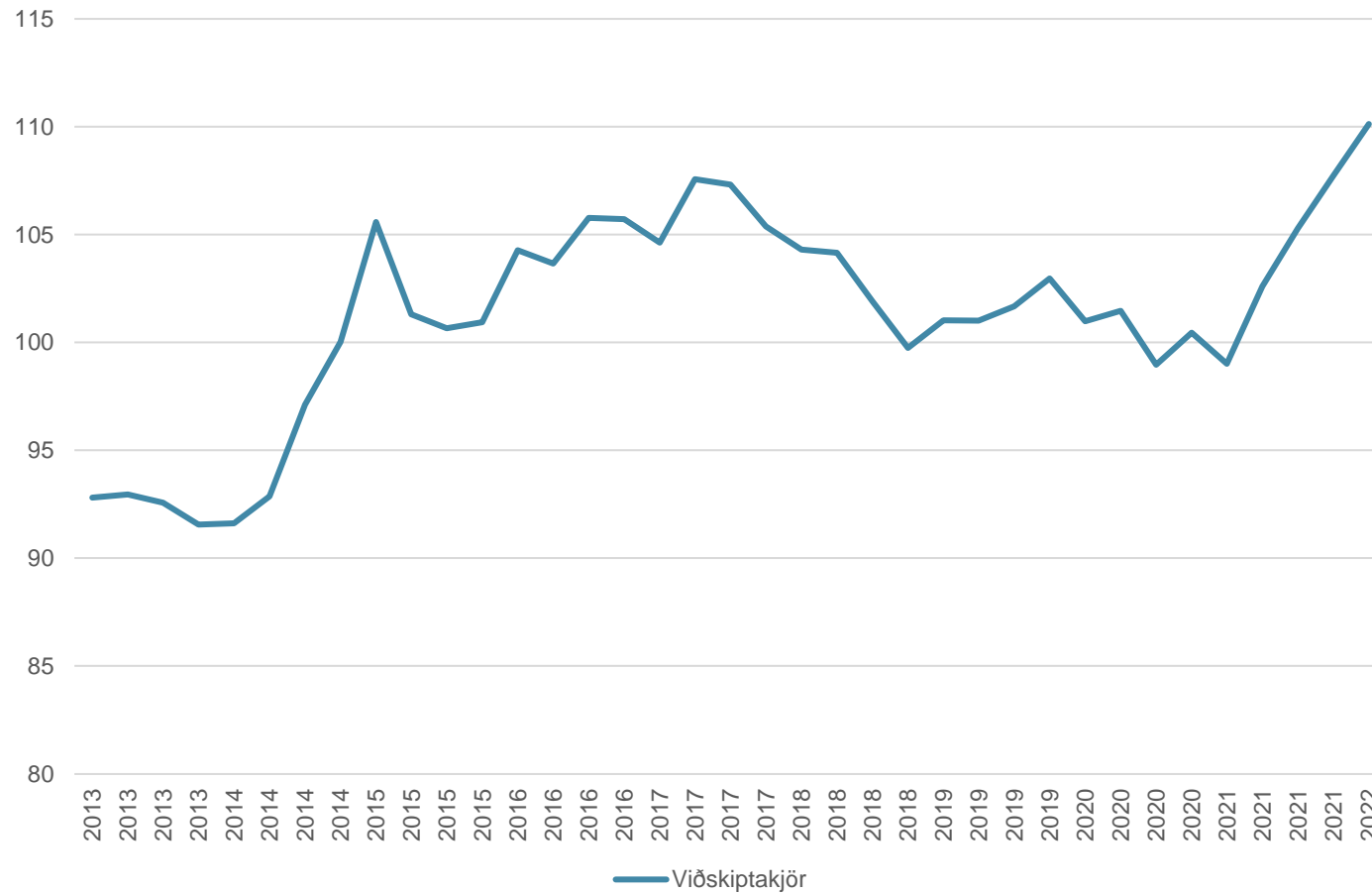


# Erlend staða þjóðarbúsins





# Viðskiptakjör





# Hrávöruverð

