

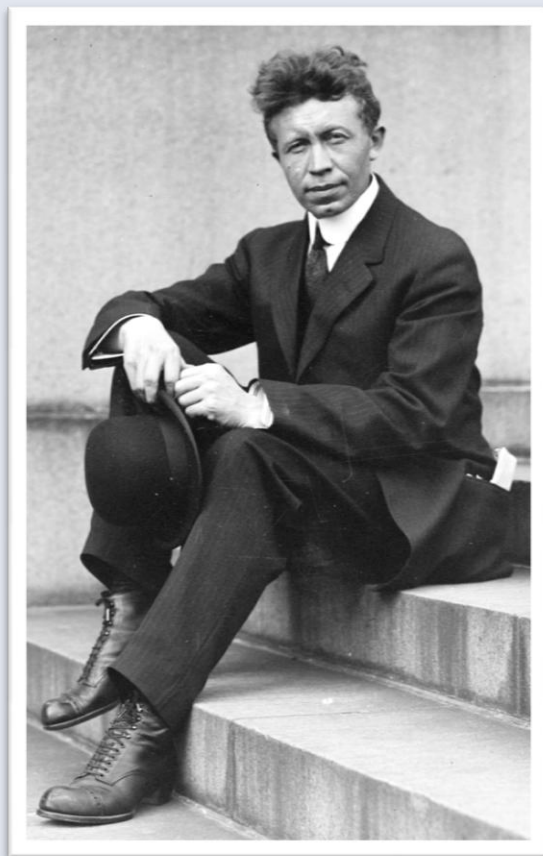
“The Friendly Arctic”

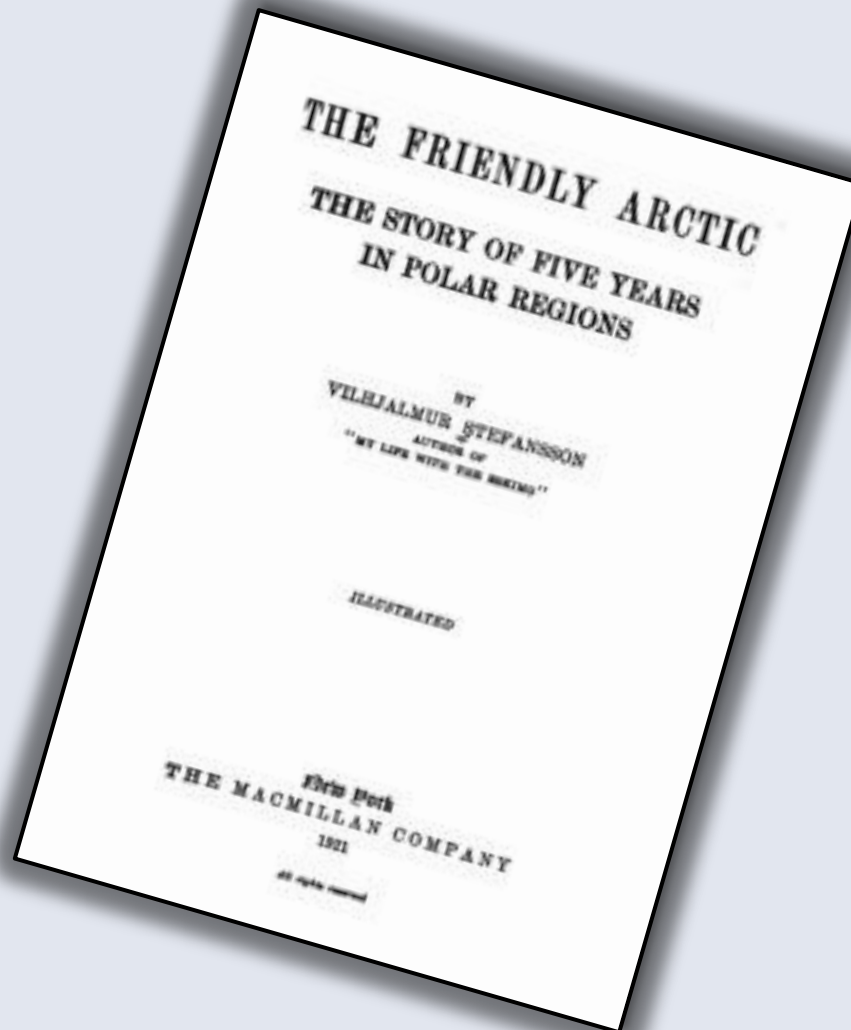
-Icelandic reflections

Steingrímur J. Sigfússon

Minister of Industries and Innovation Iceland

Vilhjalmur Stefansson 1879-1962





New Arctic / High North horizons...

By courtesy of Arctic Photo Ltd, Reykjavik, Iceland

www.anr.is



MINISTRY OF INDUSTRIES
AND INNOVATION

Polar bear in Iceland again...



Today a polar bear came to Iceland again. in 2008, 2 or 3 came to the northern part of Iceland and now we have a small one in the north eastern part of iceland. most likely it will be shot so that it will not kill any people...

the funny thing is that last time, it was no crisis on iceland and a lot of people wanted to spend a lot of money saving the animals, but now that we are in the middle of a crisis it is not

The Arctic Council: a success...

By courtesy of Arctic Photo Ltd., Reykjavik, Iceland

www.anr.is



MINISTRY OF INDUSTRIES
AND INNOVATION

Changing ideas: The ecosystem approach...

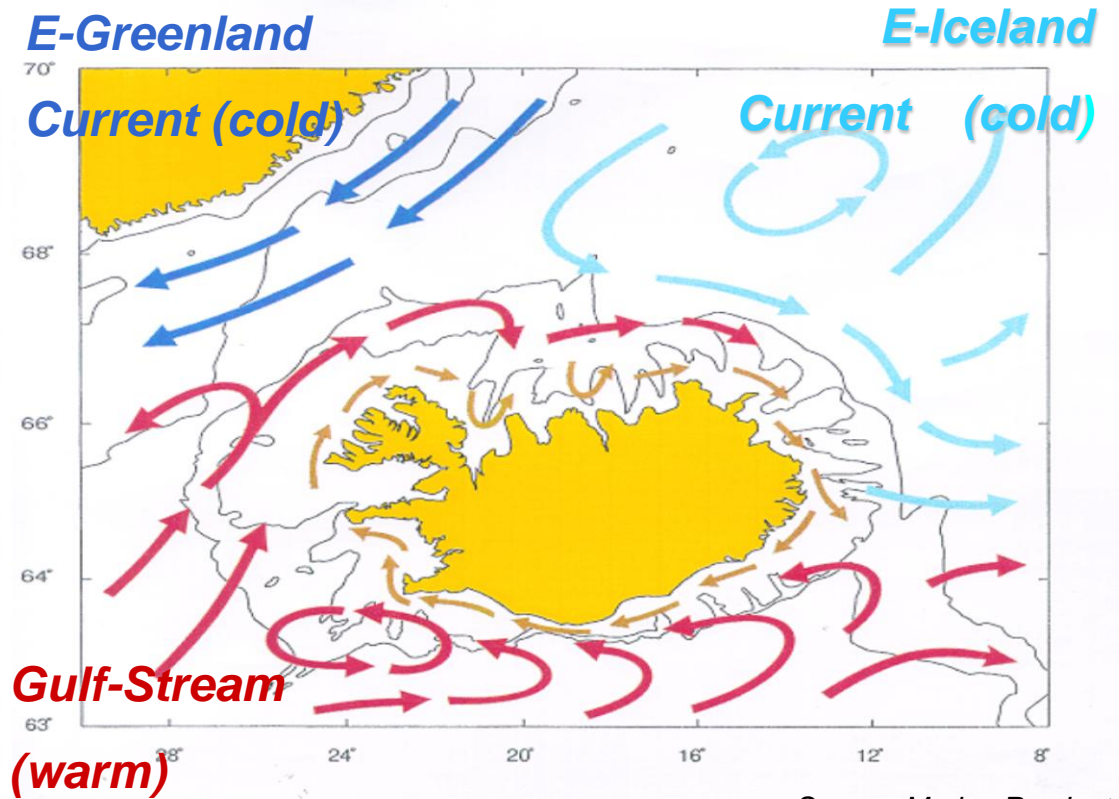
By courtesy of Arctic Photo Ltd, Reykjavik, Iceland

www.anr.is



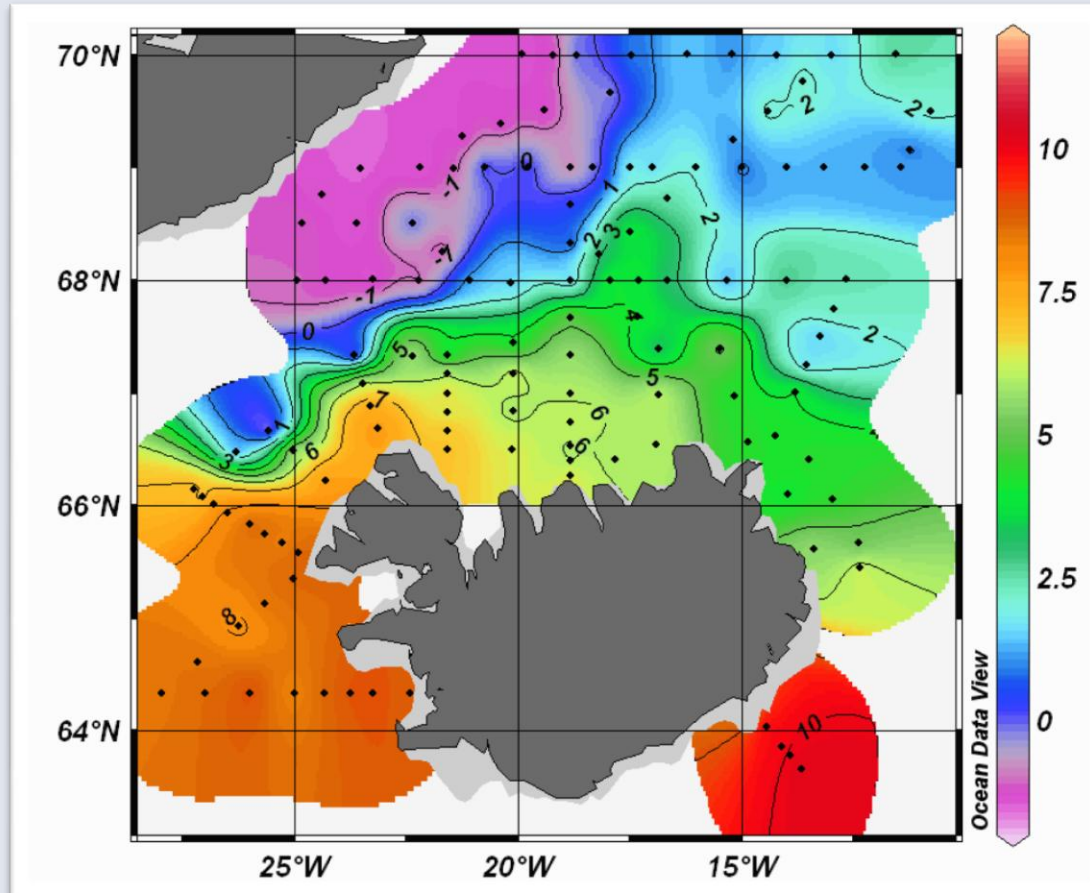
MINISTRY OF INDUSTRIES
AND INNOVATION

Ocean currents



Source: Marine Res.Inst.

Sea temperature at 50m depth - August 2007



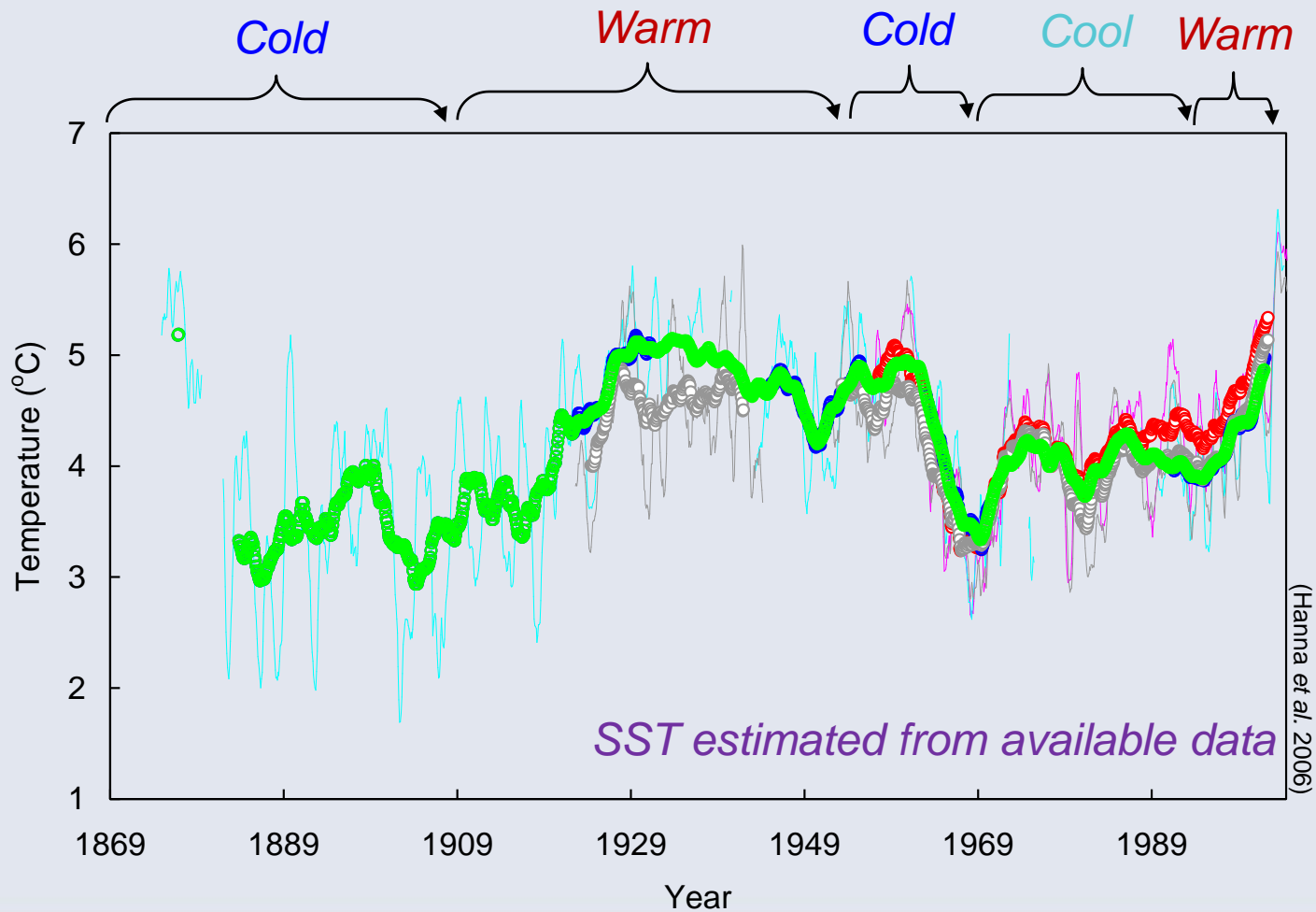
*Temperature at
the coast of Iceland
in summer:
-1-10+ C*

*Great variability in
temperature range*

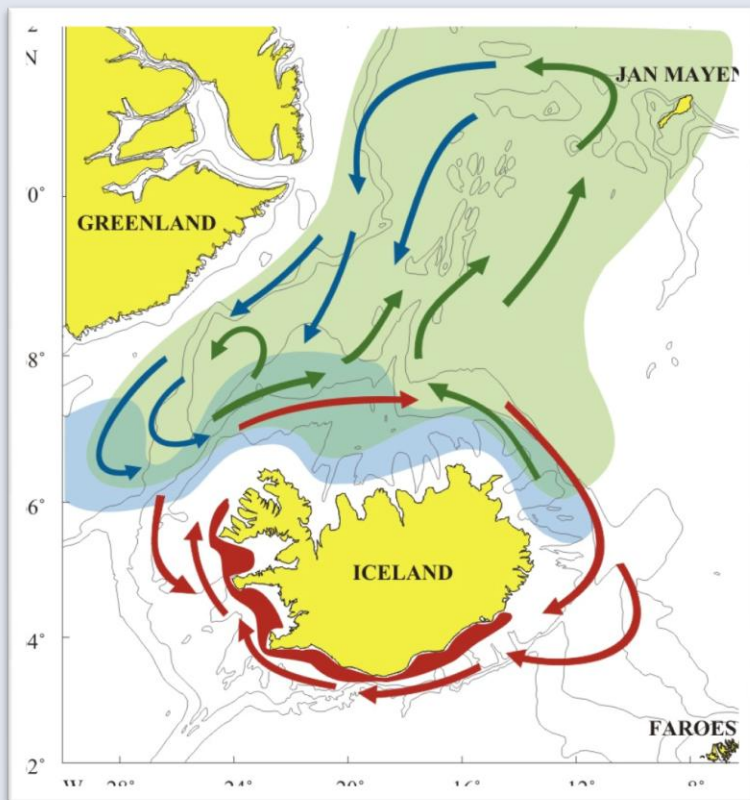
Source: Marine Res.Institute

Sea Surface Temperature (SST) north of Iceland

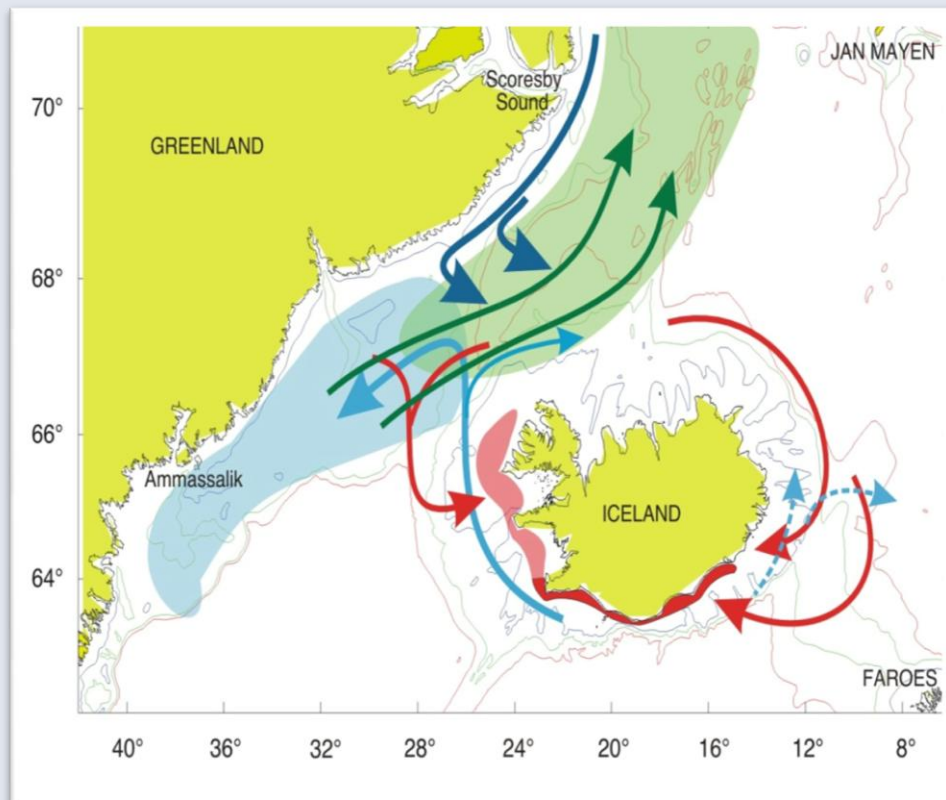
Warming up in recent years similar to mid 20th century



Capelin - migration and distribution



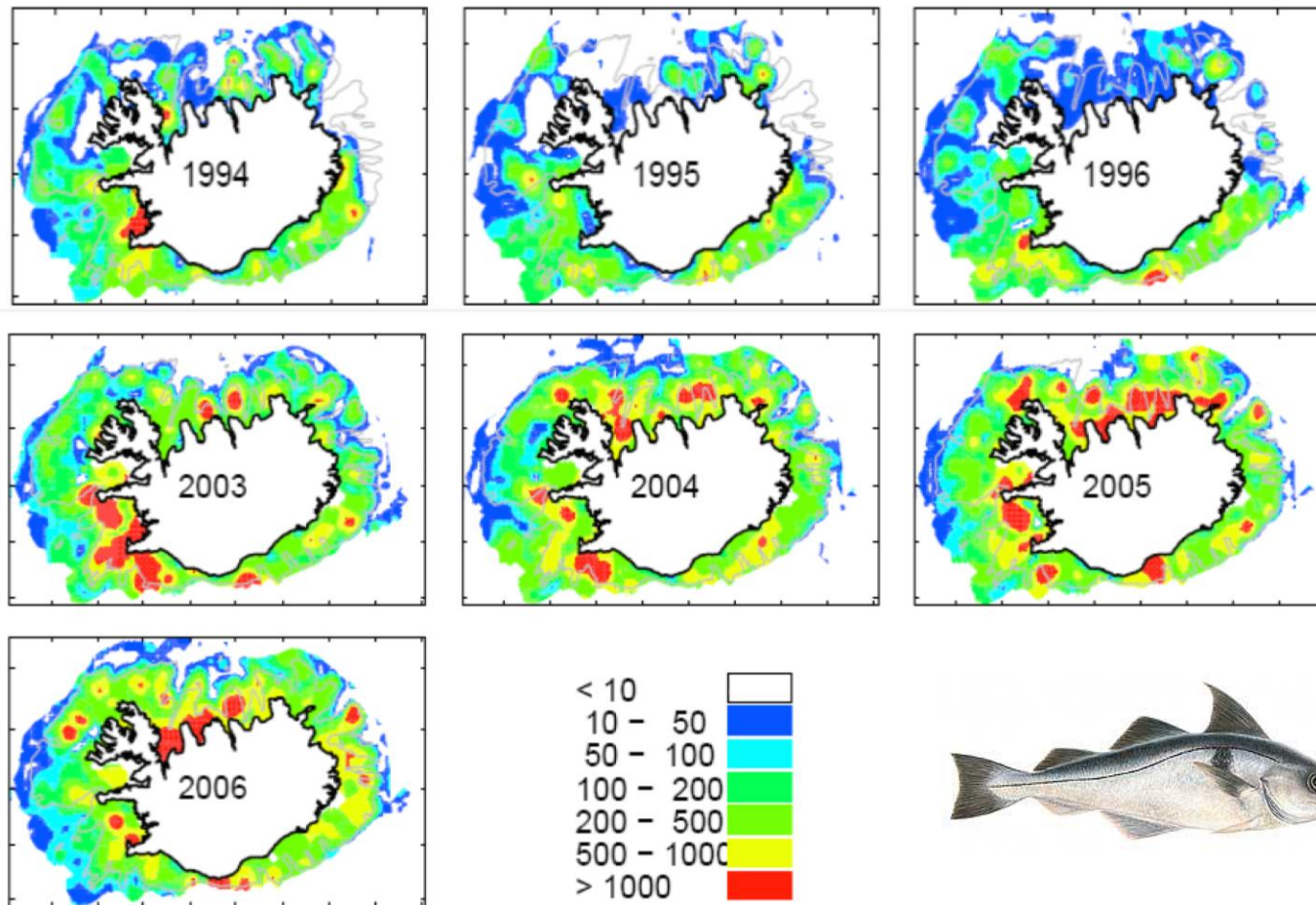
Before 2000



After Hjalmar Vilhjálmsson

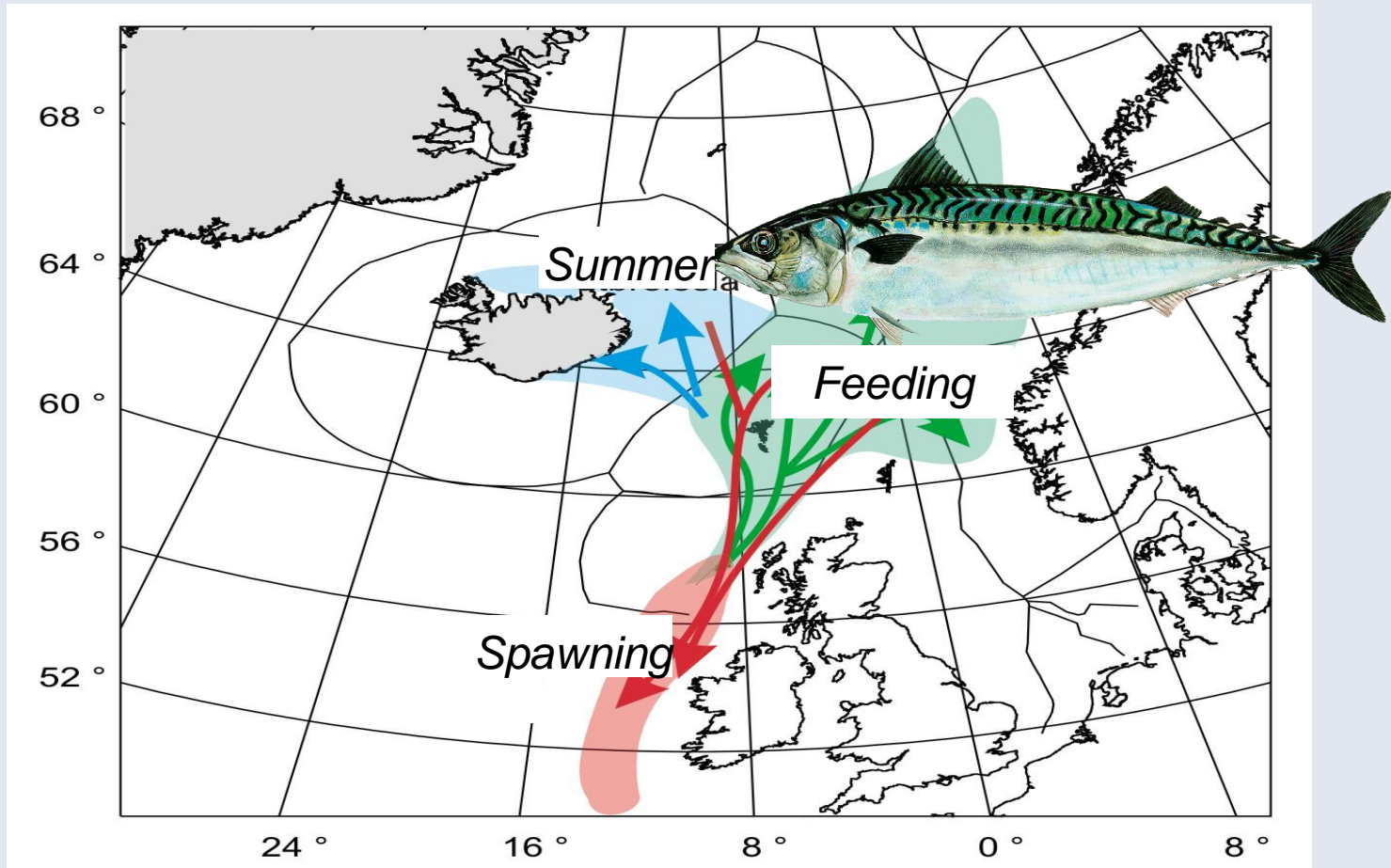
After 2000

Haddock: Changed distribution due to ocean climate variability

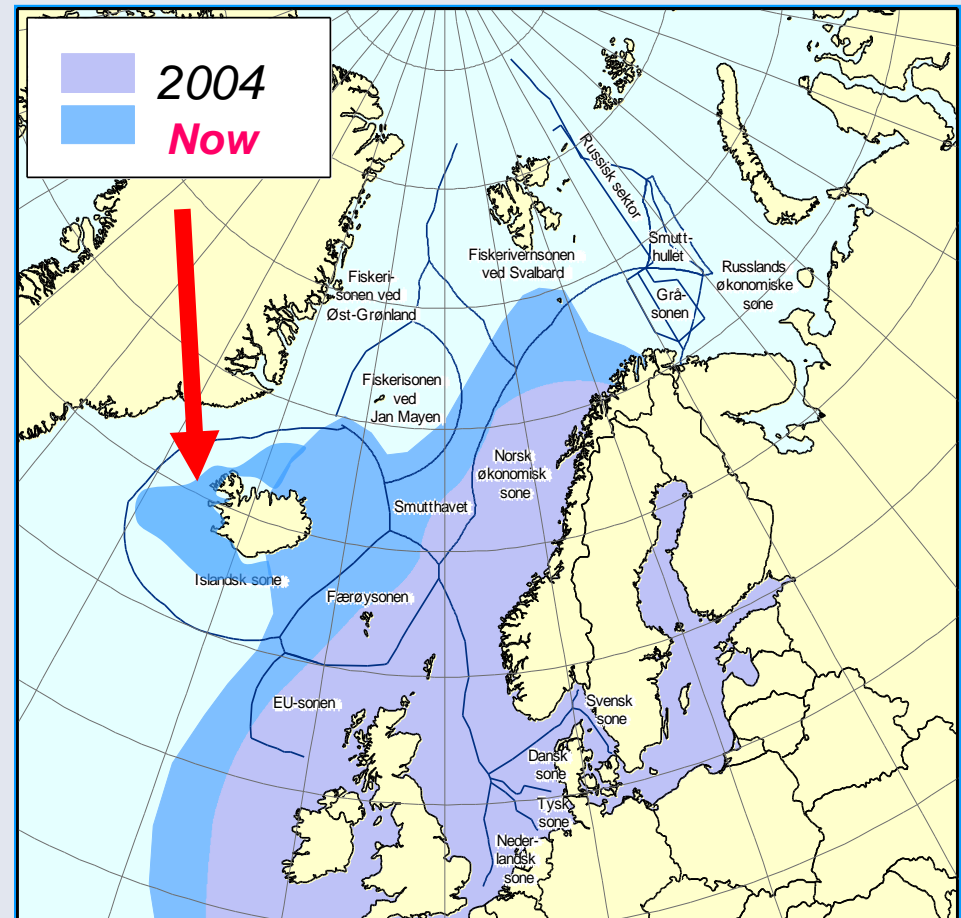
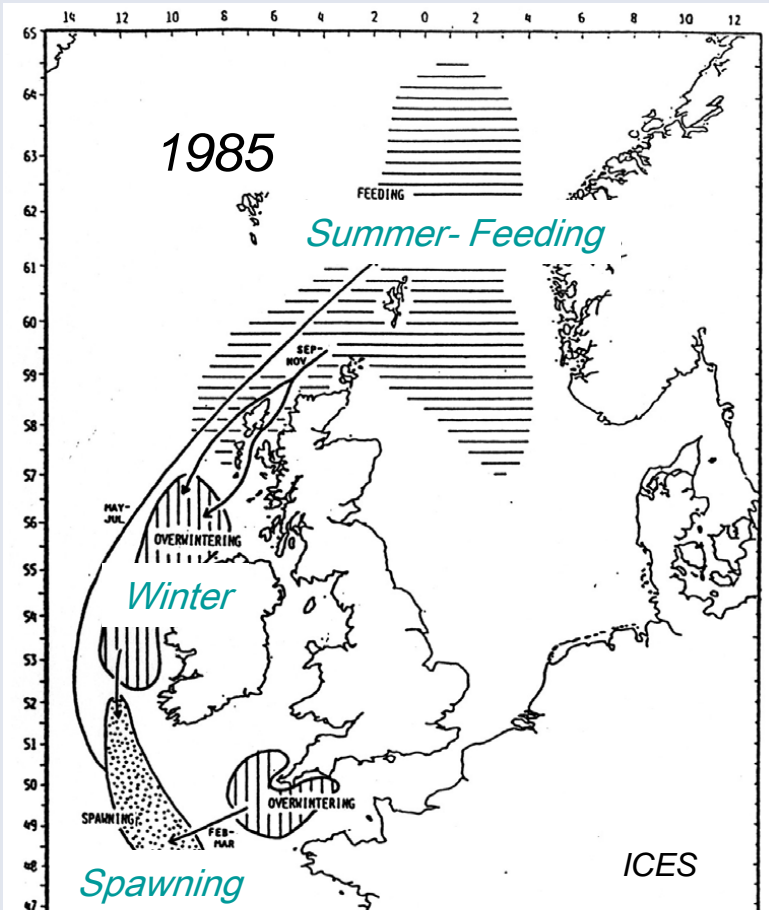


Source: Marine Res.Institute

Mackerel – northernmore distribution during the last decade



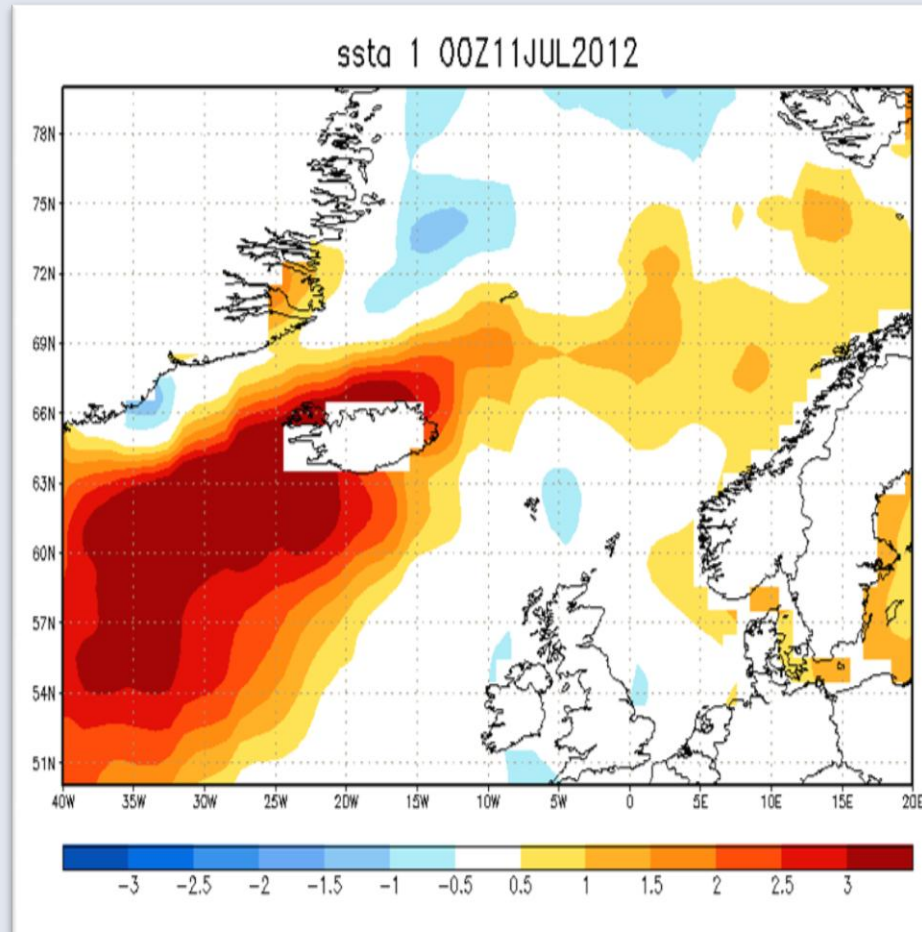
Mackerel distribution in earlier years and **NOW**



ICES. 1990. Second report of the EEC - norwegian joint scientific group on migration and area distribution of mackerel (western stock). ICES CM 1990 / H:5.

Sea Surface temperature July 2012

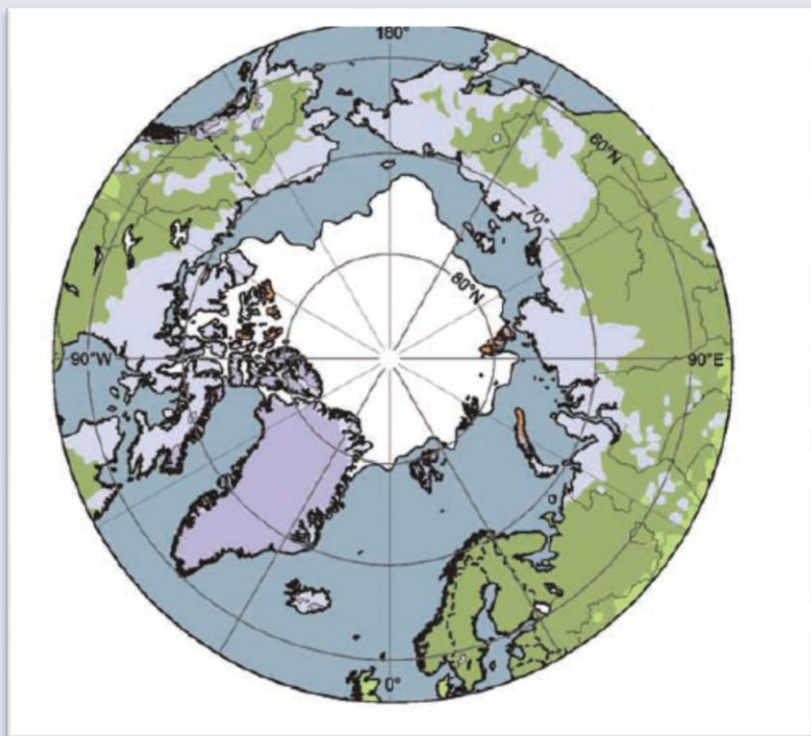
Deviation from 20 year mean



Source: ICES WGNAPES,
Report Ecos. Survey in
NE-Atlantic July-Aug 2012

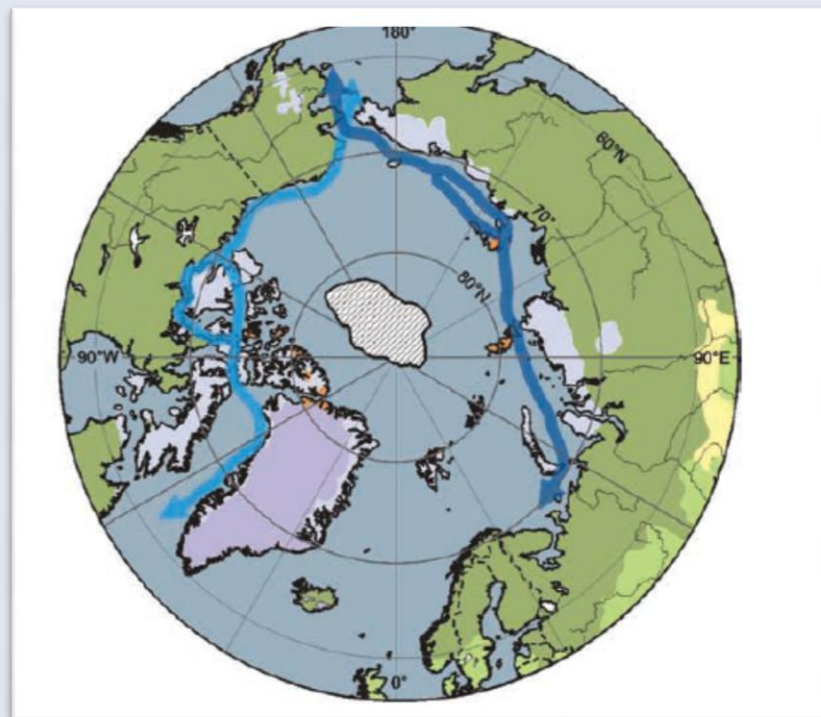
Predicted ice coverage and sailing routes now and in the year 2080

Now



Ice in summer

2080



ACIA Report, 2007

In closing...

