

Agreed Minutes

on the Delimitation of the Continental Shelf beyond 200 Nautical Miles between Greenland and Iceland in the Irminger Sea

1. The Minister for Foreign Affairs of the Kingdom of Denmark, together with the Premier of the Government of Greenland, and the Minister for Foreign Affairs of Iceland wish to effect the delimitation of the continental shelf beyond 200 nautical miles from the baselines, between Greenland and Iceland, subject to rights and obligations under the United Nations Convention on the Law of the Sea, hereinafter referred to as “the Convention”. This will be done taking into account, *inter alia*, the functions of the Commission on the Limits of the Continental Shelf established in accordance with Annex II to the Convention, hereinafter referred to as “the Commission”.

2. These *Agreed Minutes* presuppose that it is documented, after consideration by the Commission, that the area of interest, *i.e.* in which the outer limits of the continental shelves of Greenland and Iceland overlap, is part of the continental shelf of each State.

3. The Ministers are in agreement that the bilateral delimitation of the continental shelf will be effected by a dividing line based on straight geodetic lines connecting the following points, defined in the International Terrestrial Reference Frame 2000 (Epoch 2000.0):

1	63°19'.207 N	30°52'.076 W
2	62°36'.512 N	32°35'.852 W
3	61°45'.338 N	33°48'.398 W
4	61°13'.451 N	34°22'.110 W
5	60°41'.565 N	35°21'.926 W
6	59°45'.756 N	36°06'.398 W
7	59°09'.860 N	36°18'.013 W
8	58°33'.964 N	37°11'.779 W

Point 1 is an updated version of the intersection point of the EEZs of the Parties (point Q of the 1997 Agreement between Iceland and Denmark/Greenland on the Delimitation of the Continental Shelf and the Fishery Zones in the Area between Iceland and Greenland). Point 8 is identical to point SGM-FP-071 of the 2012 Partial Submission of the Kingdom of Denmark on the Southern Continental Shelf of Greenland.

The dividing line is based on the following apportioning ratio of the area of interest:

Denmark/Greenland 53%; and
Iceland 47%.

By way of illustration, the dividing line and the points, based on the outer limits set forth in both States’ partial submissions, have been drawn on the two sketch maps appended to these *Agreed Minutes* (Appendix I).

4. The dividing line set forth in paragraph 3 does not restrict the use of relevant information by the States if submitting further documentation concerning the outer limits of the continental shelf to the Commission.

5. Iceland submitted its relevant documentation concerning the outer limits of its continental shelf in the area to the Commission in 2009. Denmark/Greenland submitted its relevant documentation concerning the outer limits of its continental shelf in the area to the Commission in 2012.

6. Each State will request that the Commission consider its documentation concerning the outer limits of its continental shelf in the area and make its recommendations on this basis, without prejudice to the submission of any further documentation by the other State at a later stage or to delimitation of the continental shelf in the area between the two States. The State concerned will in this connection declare that such a request is provided for in these *Agreed Minutes*.

7. When submitting the aforementioned request, each State will notify the Secretary-General of the United Nations in accordance with the Rules of Procedure of the Commission, that it does not object to the Commission considering the documentation of the other State and making recommendations on this basis, without prejudice to the submission of any further documentation by the other State at a later stage or to the question of bilateral delimitation of the continental shelf between the two States.

8. If, after consideration by the Commission, the area of interest is adjusted, it will be divided according to the same apportioning ratio, as defined in paragraph 3.

Any adjustment of the dividing line set forth in paragraph 3 will be made in such a way that it causes the smallest possible departure from its general direction and the number of turning points.

9. As soon as possible, and no later than three months after the States have concluded the procedure set out in Article 76 (8) of the Convention, the States will meet with a view to concluding an agreement on the final determination of the boundary line in accordance with these *Agreed Minutes* and their appendices, including the Model Agreement contained in Appendix II. If such a meeting has not been held by the end of 2017, the States will initiate consultations on the further follow-up.

10. These *Agreed Minutes* constitute a joint statement of the Ministers' agreement on the provisional delimitation of the continental shelf in the area of interest, subject to fulfilment of their internal requirements.

These *Agreed Minutes* are based on the historic concept of the *Agreed Minutes* of 2006 between Denmark/the Faroe Islands, Iceland and Norway regarding the delimitation of the continental shelf beyond 200 nautical miles in the southern part of the Banana Hole in the North-East Atlantic. They reaffirm the extremely close and good neighbourly relations between Denmark/Greenland and Iceland, their common commitment to promoting the international law of the sea and the importance they attach to the United Nations Convention on the Law of the Sea as the legal framework for the peaceful uses of the oceans and seas.

Signed in duplicate at Reykjavik and Copenhagen on 16 January 2013 in the English language.

The Minister for Foreign Affairs of the Kingdom of Denmark

Villy Søvndal

The Premier of the Government of Greenland

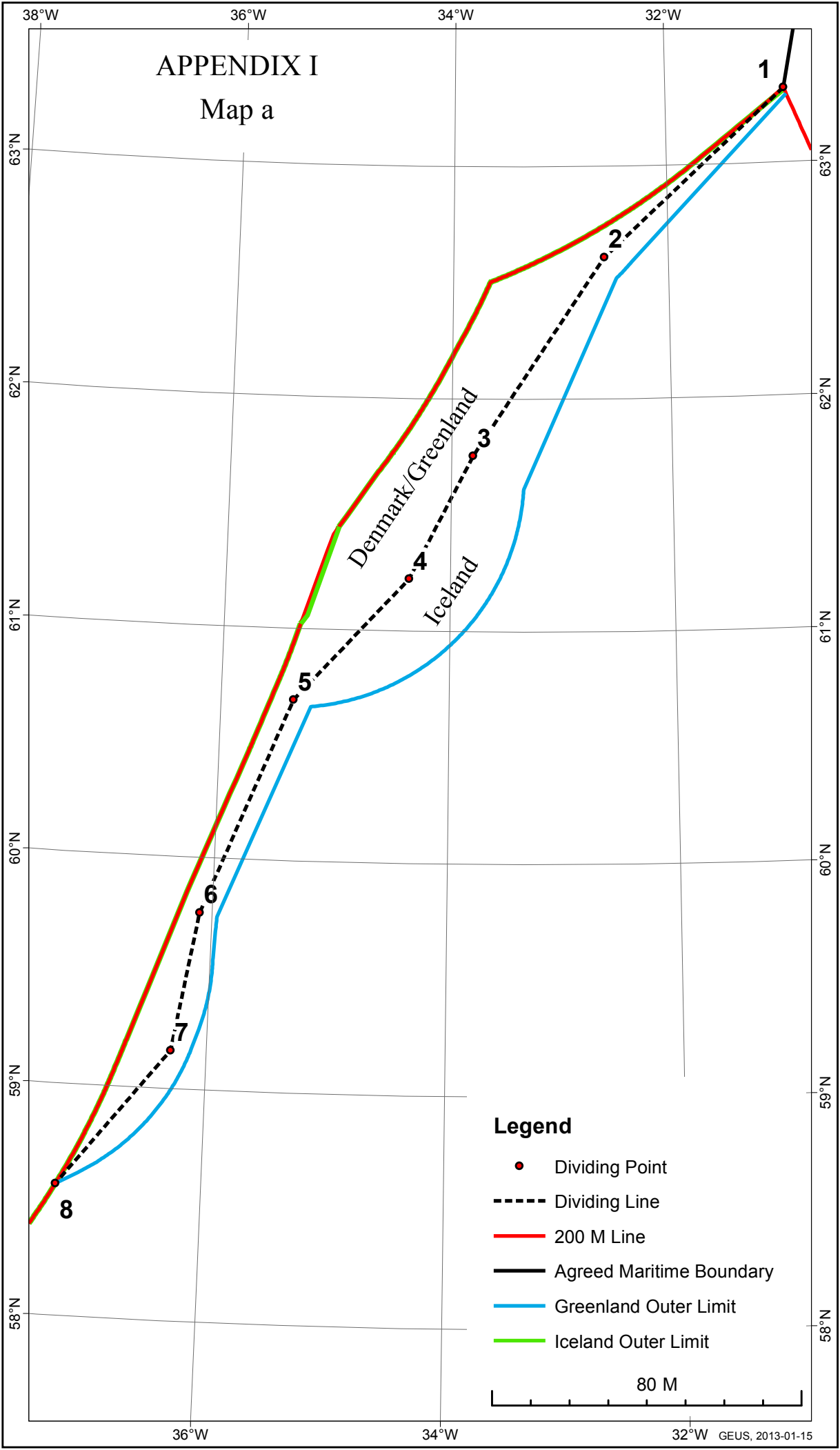
Kuupik Kleist

The Minister for Foreign Affairs of Iceland

Össur Skarphéðinsson

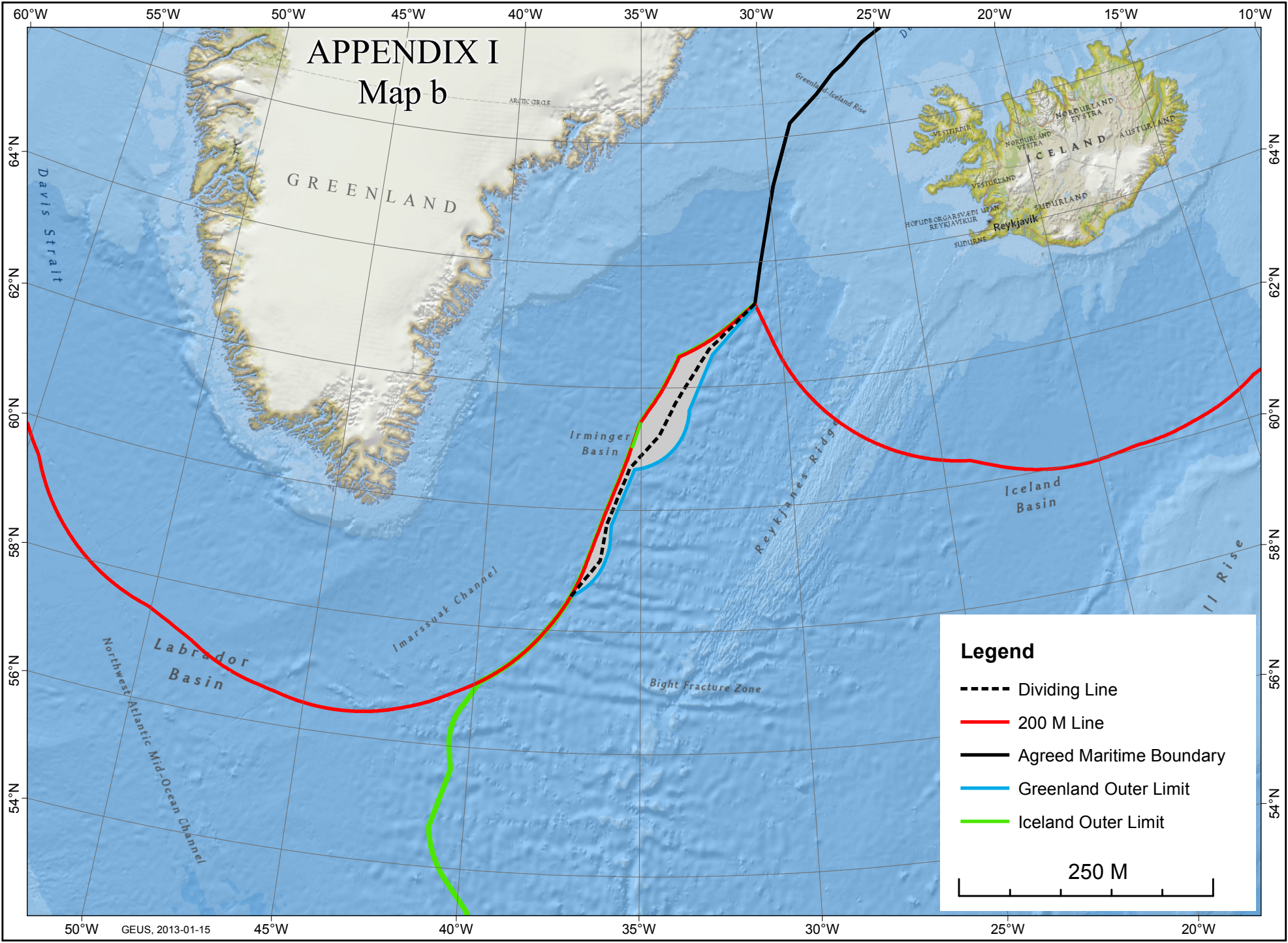
APPENDIX I

Map a



APPENDIX I

Map b



MODEL AGREEMENT:

**Agreement between the Government of the
Kingdom of Denmark together with the
Government of Greenland, of the one part, and the
Government of Iceland, of the other part, concerning the
delimitation of the continental shelf beyond 200 nautical
miles in the area between Greenland and Iceland in the
Irminger Sea**

The Government of the Kingdom of Denmark together with the Government of Greenland, of the one part, and the Government of Iceland, of the other part,

Desiring to maintain and strengthen the good neighbourly relations between Denmark/Greenland and Iceland, and

Referring to the *Agreed Minutes* of 16 January 2013 between Denmark/Greenland and Iceland,

Have agreed as follows:

Article 1

Beyond 200 nautical miles from the baselines from which the breadth of the territorial sea of each Party is measured, the boundary line delimiting the continental shelf in the area between Greenland and Iceland in the Irminger Sea has been determined as straight geodetic lines connecting the following points, defined in the International Terrestrial Reference Frame 2000 (Epoch 2000.0), in the order specified below:

Point 1:

Point 2:

...

...

By way of illustration, the boundary line and the points listed above have been drawn on the map annexed to this Agreement.

Article 2

[provision on transboundary mineral deposits - to be negotiated between the competent authorities of the Parties before conclusion of the Agreement.]

Article 3

This Agreement is without prejudice to the respective Parties' views on questions that are not governed by this Agreement, including questions relating to their exercise of sovereign rights or jurisdiction over the seabed and its subsoil.

Article 4

This Agreement enters into force when the Parties have notified each other in writing that the necessary internal procedures have been completed.

Done at ... on the ... day of in duplicate in the Danish, Greenlandic and Icelandic languages, all three texts being equally authentic.

For the Government of the Kingdom of Denmark

For the Government of Greenland

For the Government of Iceland